

Evolution Is A Lie

Since the 6 days of creation were completed, God has made it very clear to everyone that the universe and everything in it was a wonderful creation and not just a mistake of chance and time.

The heavens declare the glory of God; And the firmament shows His handiwork. Day unto day utters speech, And night unto night reveals knowledge. There is no speech nor language Where their voice is not heard. Their line has gone out through all the earth, And their words to the end of the world. (Psalms 19:1-4)

But...

The fool has said in his heart, "There is no God." They are corrupt, and have done abominable iniquity; There is none who does good. (Psalms 53:1)

In 1859, Charles Darwin published "On the Origin of Species" which was the foundational work that defined evolution. This book denied the existence of God and the fact that God created the universe and everything in it. Instead, Darwin's book defined the "THEORY" of evolution...

Let's start by looking at some definitions...

Evolution: A gradual process in which something changes into a different and usually more complex or better form by numerous, successive, and slight modifications.

Hypothesis: An initial and uncertain guess as to how something works that needs to be tested and proven through experimentation and observation.

Theory: After a hypothesis has been investigated through experimentation and observation and seems to be correct most of the time, it is changed to a theory.

Law: After a theory has been tested for an extended period of time using all possible methods of experimentation and observation and is proven to be correct all the time (100%), then it is changed to a law.

Very few theories actually make it to be laws. Evolution is a theory that has been proven to be incorrect; however, it is being taught as a law to our sons and daughters in our local schools as well as in highly esteemed universities around the world. Please be assured that evolution was proven to be wrong many years ago but the pride and evilness of man has not allowed the truth to be told...

For the wrath of God is revealed from heaven against all ungodliness and unrighteousness of men, who suppress the truth in unrighteousness, because what may be known of God is manifest in them, for God has shown it to them. For since the creation of the world His invisible attributes are clearly seen, being understood by the things that are made, even His eternal power and Godhead, so that they are without excuse, (Romans 1:18-20)

Because man is wicked in his heart, he denies the existence of God. Man wants to be in control and cannot accept the fact that he owes his life and all he has to an invisible God. Due to pride, greed, insecurity, and corruption, man continues to hide the truth about creation.

This document is being written as a very high level overview of why evolution is foolishness and that it was proven to be wrong many years ago. This is not meant to be an in-depth study of any of the topics presented; however, the reader is urged to look more deeply into the subject matter in order to gain a full understanding of the facts and topics presented here. It is important as Christians that we be able to defend the faith when called upon to do so and the more tools we have in order to help people understand the lies around them and to come to the truth of Jesus Christ, the better.

But sanctify the Lord God in your hearts, and always be ready to give a defense to everyone who asks you a reason for the hope that is in you, with meekness and fear; (1 Peter 3:15)

We will focus on 3 main reasons why evolution was proven to be wrong many years ago.

These 3 reasons are:

- 1) **Irreducible Complexity** – This is the when a complex mechanism or organism ceases to function properly if any one of its components are removed. In other words, if you take any piece away, it breaks.

****We will focus on how the human cell structure is irreducibly complex.**

- 2) **Intelligent Source Requirement for all Information** – This is the theorem that all information must come from an intelligent source. As stated by Dr. Werner Gitt in his book *“In the Beginning Was Information”*:
 - a. There is no known law of nature, no known process, and no known sequence of events that can cause information to originate by itself in matter.
 - b. When its progress along the the chain of transmission events is traced backwards, every piece of information leads to mental source, the mind of the sender.

****We will focus on the human genome (DNA) and the fact that it is comprised of huge amounts of complex information that needed to come from a creator.**

- 3) **Intermediary Fossil Record** – Assuming evolution is correct, this is the fossil record that should exist between a less evolved species (example – monkey) and a more evolved species (example – humans) that shows the “middle” or intermediate steps of evolution.

****We will focus on the fact that there are fossils for monkeys and fossils for humans, but there are no fossils for the dozens or possibly hundreds of intermediate stages that would be required for a monkey to evolve to a man.**

Irreducible Complexity

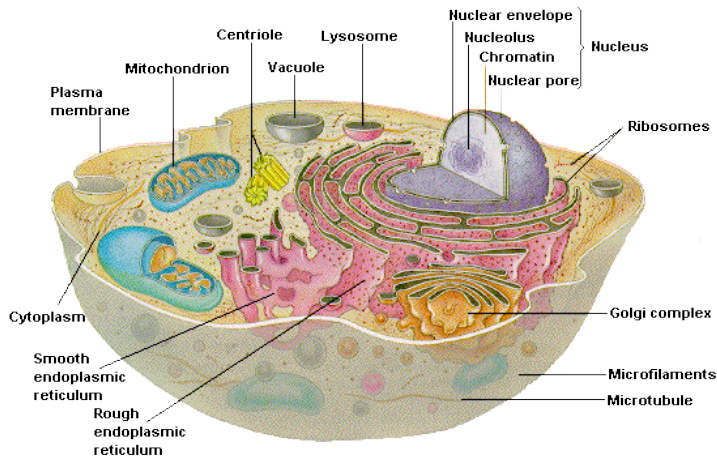
Charles Darwin Stated:

“If it could be demonstrated that any complex organ existed which could not possibly have been formed by numerous, successive, slight modifications, my theory would absolutely break down.”
 (Cited from Michael J. Behe, *Darwin’s Black Box*, 1998)

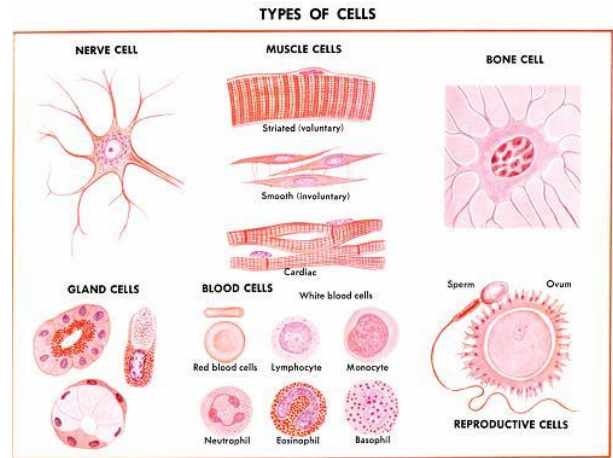
What this means that if anything exists in nature that is irreducibly complex, Darwin’s theory is incorrect. Because the true inner workings of the cell were not understood at Darwin’s time, they were unable to prove this.

SORRY CHARLIE!!!

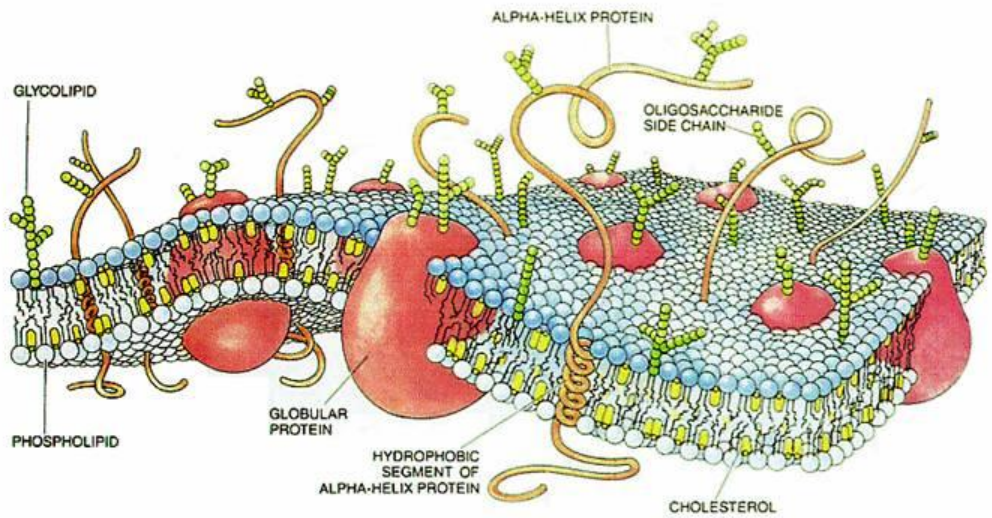
The human cell is just one example of many that proves Darwin’s theory to be false. If any part of a human cell is removed, the cell ceases to function. What this means is that the entire cell structure had to be **CREATED** at the same moment and that it could have never evolved in successive steps.



Typical Human Cell



Types of Human Cells



Cell Membrane

NOTE: There are an estimated 100 Trillion cells in the human body (100,000,000,000,000)

Intelligent Source Requirement for all Information

It is absolutely necessary for all information (structured data) to come from an intelligent source. At the time when Darwin was alive, the workings of the human cell and the existence of DNA were unknown. Since DNA was discovered, it has been amazing scientists and others as to the incredible amount of complex data that is contained within a single strand of DNA.

DNA is located in the nucleus of every living organism's cell. There are incredible "micro-machines" within the cell and the bodies of living organisms that are capable of breaking apart, copying, transporting, and re-assembling pieces of information that is contained within a strand of DNA.

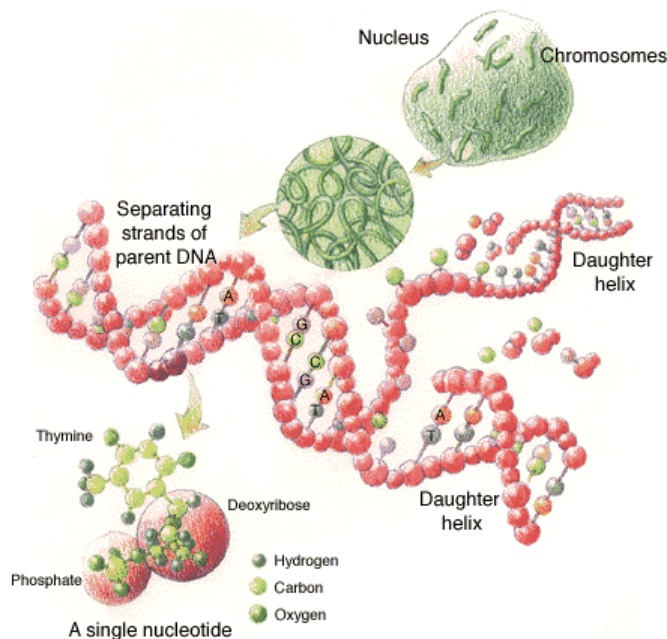
The complete Human genome consists of approximately 30 Billion bytes of information, in the form of chromosome pairs, which is used to build all of the parts required for a fully functional human body.

- There are approximately 30,000,000,000 bytes of information in a set of human DNA.
- There are approximately 2000 bytes of information on an 8½" x 11" piece of writing paper.
- This equates to 15 Million pages of complex information contained in the human genome.

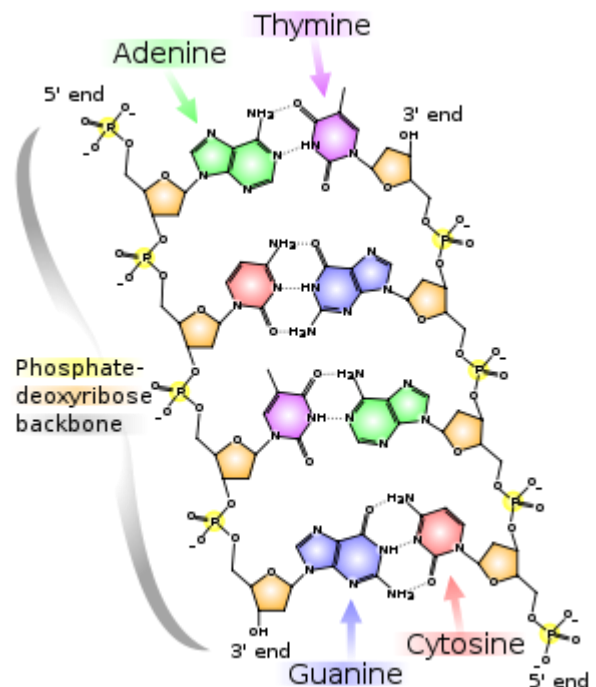
QUESTION: Where did all of that wonderful information come from?

ANSWER: From the Almighty GOD of the universe!

I will praise You, for I am fearfully and wonderfully made; Marvelous are Your works, And that my soul knows very well. (Psalms 139:14)



Overview of DNA Structure



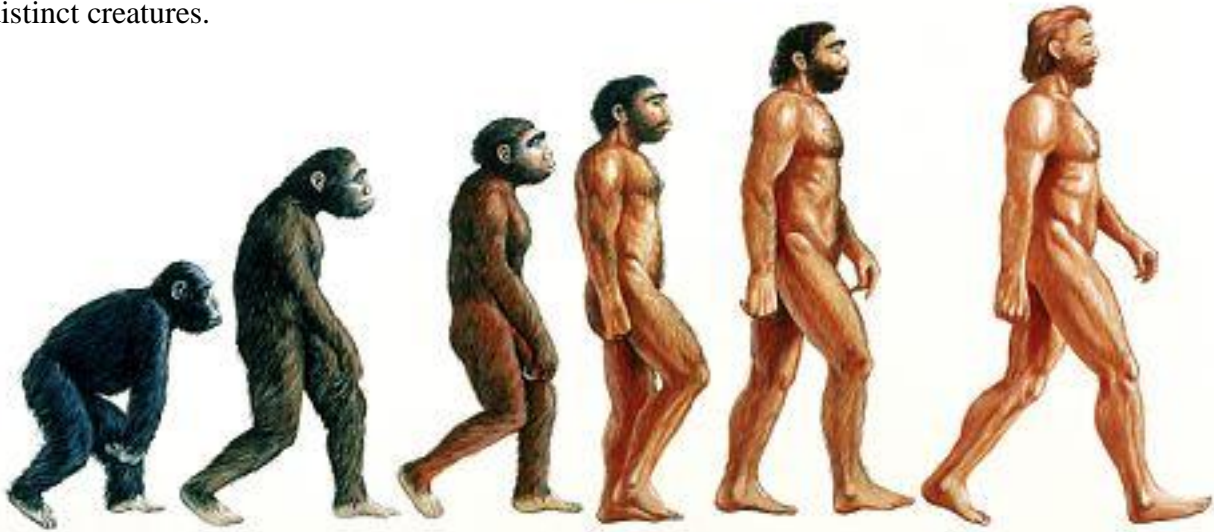
Specific DNA Components

Intermediary Fossil Record

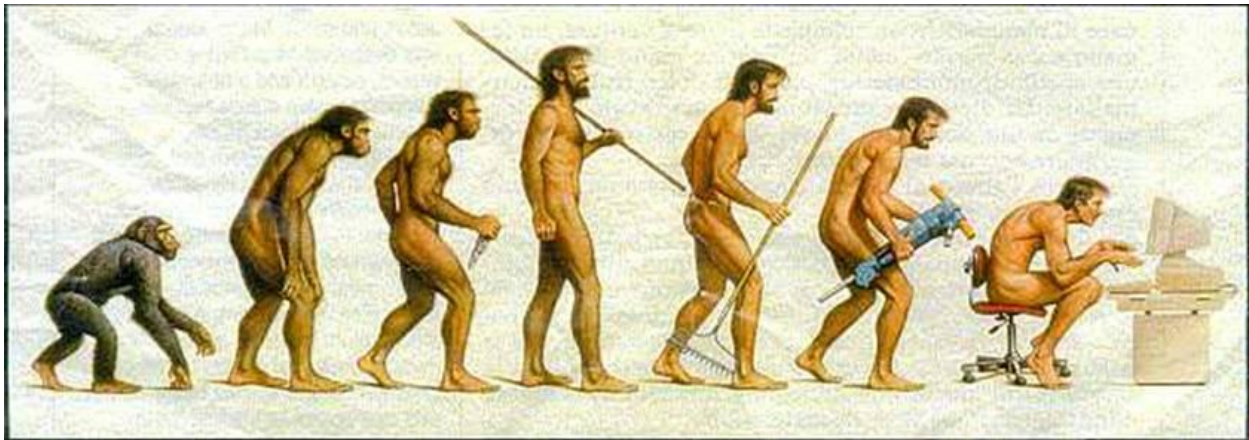
Charles Darwin Stated:

*“The number of intermediate varieties, which have formerly existed on the earth, must be truly enormous. Why then is not every geological formation and every stratum full of such intermediate links? Geology assuredly does not reveal any such finely graded organic chain; and this, perhaps, is the most obvious and gravest objection which can be urged against my theory.” (Cited from Charles Darwin, *The Origin of Species*, 1859)*

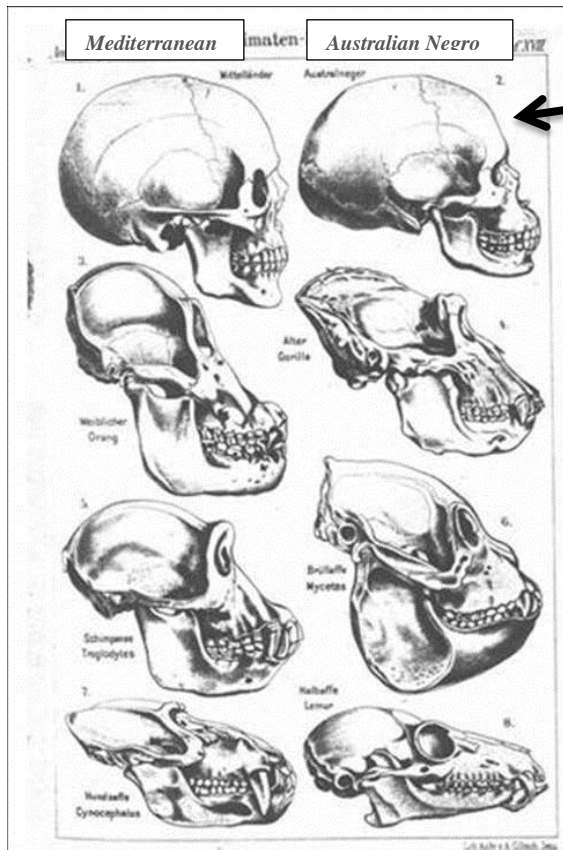
What this means is that if we take an example of humans evolving from monkeys, the monkey would be the less evolved step, then there would be dozens or maybe hundreds of “intermediate” steps, then it would finally become the humans we are today. We can find fossils for monkeys, and we can find fossils for humans; however, there are no fossils for any of the “intermediary” or middle steps. This is because God created monkeys and God created man as two separate and distinct creatures.



Every picture ever drawn and every life size model ever sculpted that depicts a “cave man” or “monkey man” have been purely artwork based on absolutely nothing real. There have been no “cave man” skulls ever found and only shards and fragments of other bones. It is absolutely impossible for an ethical artist to create these depictions from the evidence presented.

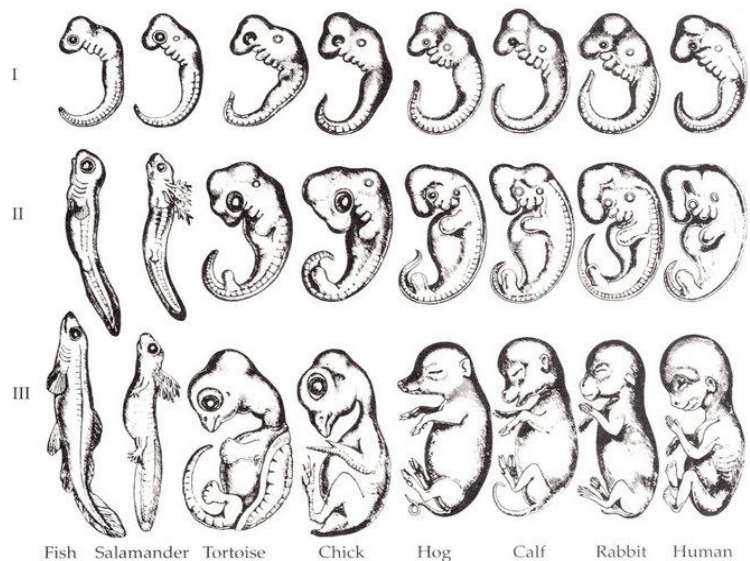


Why not just create our own version?

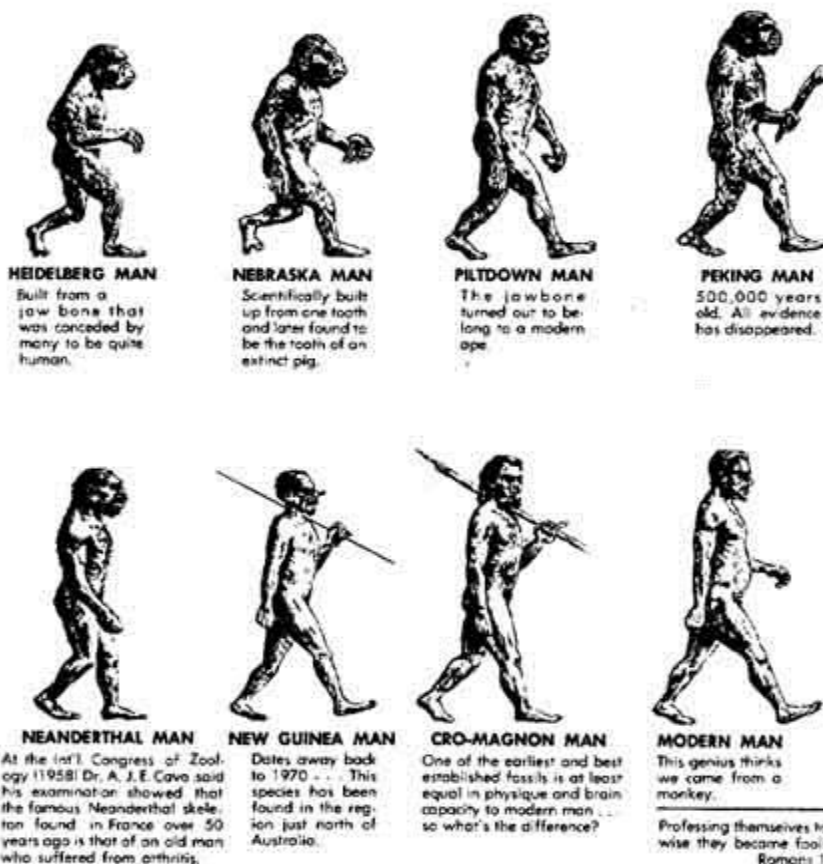


Drawing from (Ernst Haeckel's, "Evolution of Man", 1920) presents a skull labeled "Australian Negro" as an intervening evolutionary stage between the "Mediterranean" skull and those of the lower primates.

This is very nice artwork but it is scientific FRAUD!



Drawing from (Ernst Haeckel's, "Evolution of Man", 1920) presents a comparison of embryos from different species. These were later proven to be fraudulent.

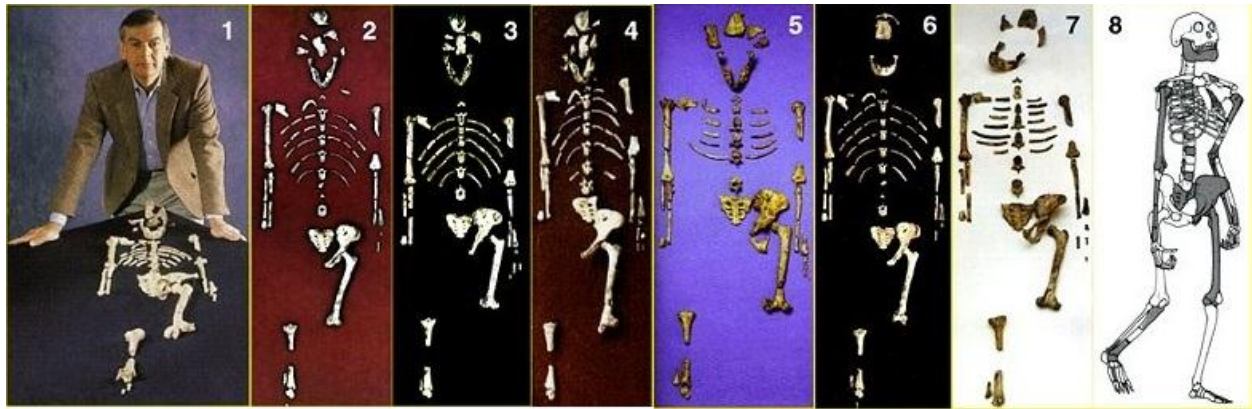


- All supposed "intermediary" fossils of man that have ever been found have been proven to be incompetent mistakes or purposeful frauds.

- Typically, a single bone or very few bone fragments are found and then an artist is coerced into drawing a rendition of what it might have looked like. The person who found the bone(s) is always the one directing the artist and in many cases they are the artist (ex. Haeckel).

- There are cases of ape bones being mixed with human bones (Pilttdown), bones from humans being misrepresented through artwork (Heidelberg, New Guinea, Cro-Magnon), bones from an arthritic man being misrepresented (Neanderthal), and even a pig tooth that was built up into an entire Nebraska Man.

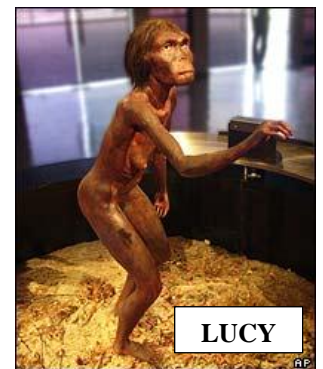
Professing to be wise, they became fools. (Romans 1:22)



One of the greatest frauds ever committed was (and still is) “Lucy”. The bone fragments shown above were found in 1974 by Donald Johanson (excavation team leader) in Ethiopia. These bone fragments were found over a huge geographic area and most have been proven to be non-hominid bones (not related to man) and they have also been shown to come from more than 30 individual skeletons. If you look closely at the 8 photographs, you will notice that none of them are presented the same. You would think something supposedly this important would be presented consistently.

The above “fabrications” were presented in the following publications:

- 1) “Lucy, The Beginnings of Humankind” by Donald Johanson, 1981
- 2) “Age of Mankind”, Author Unknown
- 3) “Origins”, National Geographic, December 1976
- 4) “Human Origins and Evolution”, David R. Pilbeam, 1983
- 5) “The Illustrated History of Early Man”, John Haywood, 2000
- 6) “Humankind Emerging”, National Geographic, 1996
- 7) “Human Origins The Search For Our Beginnings”, Herbert Thomas, 1995
- 8) “Cambridge Encyclopedia of Human Evolution”, 1992



Hmmm... They got this from those bone fragments?

Conclusion

Jesus was tempted by Satan 3 times in the wilderness to sin. Satan used “the lust of the eyes”, “the lust of the flesh”, and “the pride of life” as his 3 main tools. Jesus used the Word of God all 3 times to rebuke Satan. This shows us that it is extremely important for us to know and live the word of God.

For all that is in the world--the lust of the flesh, the lust of the eyes, and the pride of life--is not of the Father but is of the world. (1st John 2:16)

It is also important for us as Christians to understand the lies and darkness of the world around us so that we might be able to help non-believers come to the truth of Jesus Christ. We need to be able to converse intelligently with non-believers and we need to always do it in a meek and humble manner. Please pray for God to give you wisdom and humbleness so that you may help to open the eyes of non-believers to the love and truth of Jesus Christ our Lord and Savior. Amen.