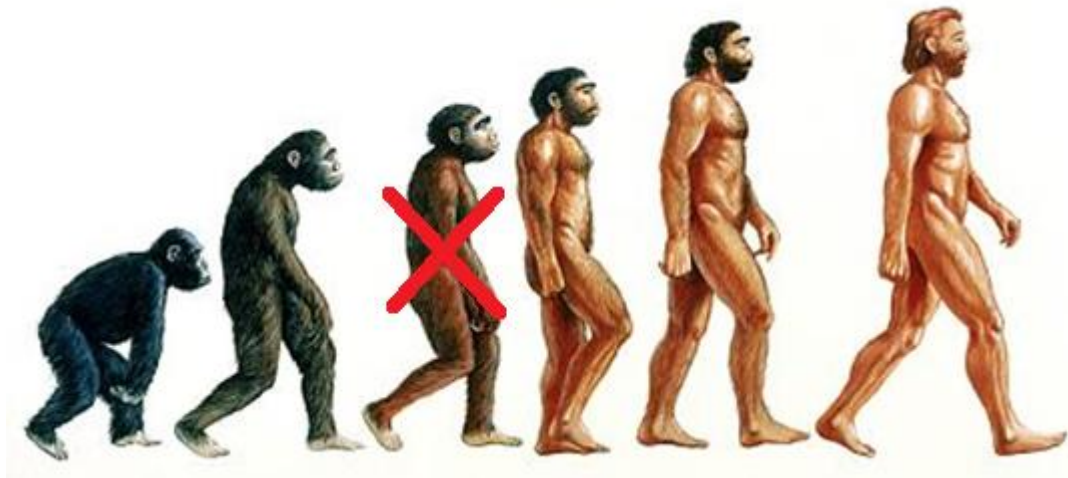


Creation vs. Evolution

Introduction

In this commentary I will present what the bible says about how life was created in contrast to what science and media promote about evolution. I'll review and analyze specific verses in the bible and will also apply sound scientific methods and techniques in order to arrive at the final conclusion.

The goal of this commentary is to prove that evolution is impossible. I will give both the scientific and the biblical sides of the story so that you may understand the entire picture.



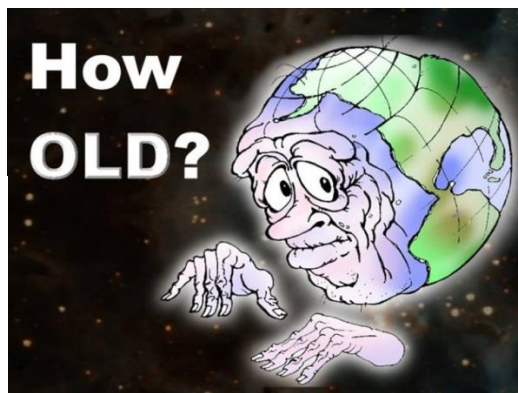
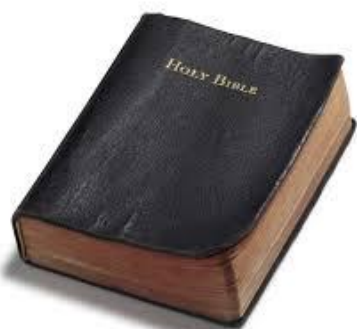
Currently, there are 5 main views on where life on earth came from:

- 1) **Biblical View:** There is a perfect and powerful God and He created all current plant and animal life as well as mankind approximately 6,000 years ago during the 6 days of creation.
- 2) **Evolutionary View:** There is no God and by random chance a lower life form occurred billions of years ago and then it slowly evolved, in tiny increments, to all of the different life forms that are known today.
- 3) **Hybrid View:** There is a god of some sort and he created the universe billions of years ago. He then sat back and allowed evolution to occur until “humans” appeared and then he chose them and gave them a soul.

- 4) **False Religion Hybrid View:** This view supports all of the mythical gods and goddesses as well as the agendas and doctrines of today's religious cults (Hindus, Buddhists, Mormons, Roman Catholics, etc). This is a form of evolution that promotes that there is a god but he evolved from a lower life form. Because of this, we can all evolve to be like a god.
- 5) **Alien Hybrid View:** This is very similar to the False Religion Hybrid View with a little different twist. There are super evolved gods (aliens) who go around “seeding” planets with their DNA in order to spread life throughout the universe. Eventually, all of this life has the possibility of evolving to “gods” also.

I will only be focusing on the first 2 views for this commentary because the last 3 have no basis as soon as evolution is disproved.

I want to make a quick note that I will not be addressing the age of the earth and universe in this commentary. There are valid biblical explanations to support both a universe that is only 6,000 years old as well as a universe that is very old depending on how certain verses and words are interpreted. The main point supported is that “life” was created by God approximately 6,000 years ago and it did not evolve by chance.



Let's recall what Paul said in his letter to Timothy:

[2 Timothy 3:16-17] All Scripture is given by inspiration of God, and is profitable for doctrine, for reproof, for correction, for instruction in righteousness, that the man of God may be complete, thoroughly equipped for every good work.

The God inspired “scripture” that is being referred to is the original Hebrew, Aramaic, and Greek text that was imparted to chosen men by the Holy Spirit. This original “inspired” text has been translated into English for us to read and is as close as possible to the original meaning; However, the translations are not perfect and there are definitely differences from the original meanings in our English translations. The original inspired word of God must always be our guide and ultimate authority.

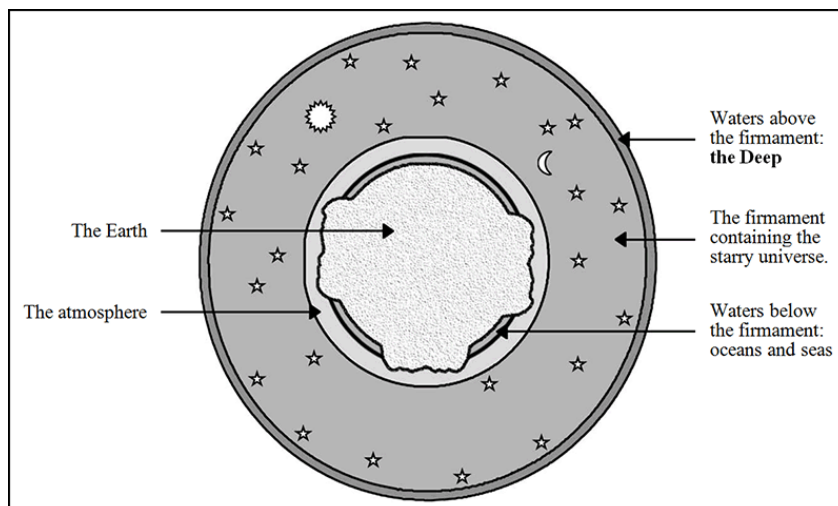
For this commentary, I’ll be using the New King James Version for all scriptural quotes due to its readability and we will use the Authorized King James Version coupled with Strong’s Exhaustive Concordance for all Hebrew, Aramaic, and Greek text research.

Now, let’s go through what the bible says about the six days of creation.

On the 1st day, God allowed light and separated it from darkness. Then He called the light day and the darkness He called night.



On the 2nd day, God formed a firmament to divide waters under the firmament from waters that were above the firmament. Then He called the firmament heaven (which was actually the sky and outer space).

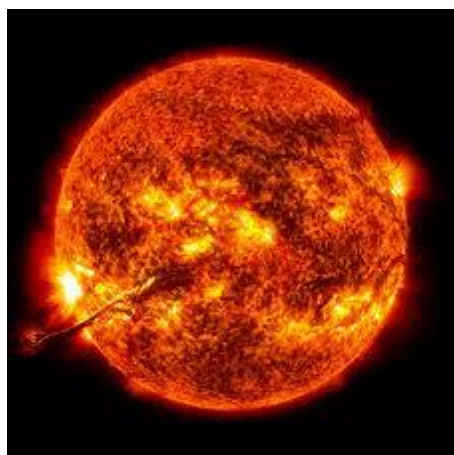


On the 3rd day, God gathered the seas together, formed dry land, and created plant life...

[Genesis 1:11-13] Then God said, "Let the earth bring forth grass, the herb that yields seed, and the fruit tree that yields fruit according to its kind, whose seed is in itself, on the earth"; and it was so. And the earth brought forth grass, the herb that yields seed according to its kind, and the tree that yields fruit, whose seed is in itself according to its kind. And God saw that it was good. So the evening and the morning were the third day.



On the 4th day, God formed the Sun, the Moon, and the stars.



On the 5th day, God created everything that lives in the water and flies in the air.

[Genesis 1:20-23] Then God said, "Let the waters abound with an abundance of living creatures, and let birds fly above the earth across the face of the firmament of the heavens." So God created great sea creatures and every living thing that moves, with which the waters abounded, according to their kind, and every winged bird according to its kind. And God saw that it was good. And God blessed them, saying, "Be fruitful and multiply, and fill the waters in the seas, and let birds multiply on the earth." So the evening and the morning were the fifth day.



On the 6th day, God created all land animals, all insects, and finally mankind.

[Genesis 1:24-31] Then God said, "Let the earth bring forth the living creature according to its kind: cattle and creeping thing and beast of the earth, each according to its kind"; and it was so. And God made the beast of the earth according to its kind, cattle according to its kind, and everything that creeps on the earth according to its kind. And God saw that it was good. Then God said, "Let Us make man in Our image, according to Our likeness; let them have dominion over the fish of the sea, over the birds of the air, and over the cattle, over all the earth and over every creeping thing that creeps on the earth." So God created man in His own image; in the image of God He created him; male and female He created them. Then God blessed them, and God said to them, "Be fruitful and multiply; fill the earth and subdue it; have

dominion over the fish of the sea, over the birds of the air, and over every living thing that moves on the earth." And God said, "See, I have given you every herb that yields seed which is on the face of all the earth, and every tree whose fruit yields seed; to you it shall be for food. Also, to every beast of the earth, to every bird of the air, and to everything that creeps on the earth, in which there is life, I have given every green herb for food"; and it was so. Then God saw everything that He had made, and indeed it was very good. So the evening and the morning were the sixth day.



This is what the bible says about the creation of life. Since the 6 days of creation were completed, God has made it very clear to everyone that the universe and everything in it was a wonderful creation and not just a mistake of chance and time.

[Psalms 19:1] The heavens declare the glory of God; And the firmament shows His handiwork.

It's known that this took place approximately 6,000 years ago because of the genealogies and events that are recorded in the bible. If you take the time to track the ages of both the people and events specifically described in the bible, it is approximately 4,000 years from the creation of Adam to the birth of Jesus Christ. Then it is approximately 2,000 years from the birth of Jesus Christ to the present time. This is where the 6,000 years comes from.

Some people try to squeeze billions of years of evolution into these verses by saying that the Hebrew term used for “day” can mean a period of time or an age and doesn’t necessarily mean a 24 hour day.

It is true that the Hebrew term used for day, which is “yome”, can mean a 24 hour day or a longer period of time such as an “age” depending on its use; However, there is specific information that definitely show the “day” used here in Genesis was a 24 hour period.

Note that at the end of each day God makes it clear that there was an evening and a morning and the day was completed. It is said in this fashion because the Hebrews counted their 24 hour days from sunset to sunset.

Another thing of note here is how God referred to everything being created after its “kind”. The Hebrew word used for “kind” is “meen” which means “species”. This is very important because this defines the uncrossable genetic lines that science is well aware of. It is impossible for two “kinds” or “species” to have valid offspring. That is, in most cases two different species cannot mate; However, in the rare case that something does cross these genetic boundaries, its offspring is infertile making it impossible for another generation to be conceived.

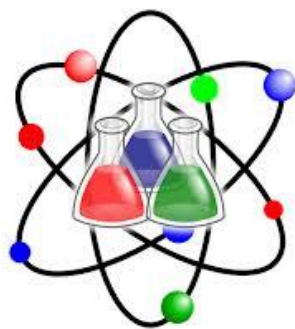


An example of this is when a horse is cross bred with a donkey and it makes a mule. The mule is always infertile and cannot breed. A mule has 63 chromosomes which results from the mixture of the horse’s 64 chromosomes and the donkey’s 62 chromosomes. This is always a “one shot deal” and there are no recorded cases of a fertile mule.

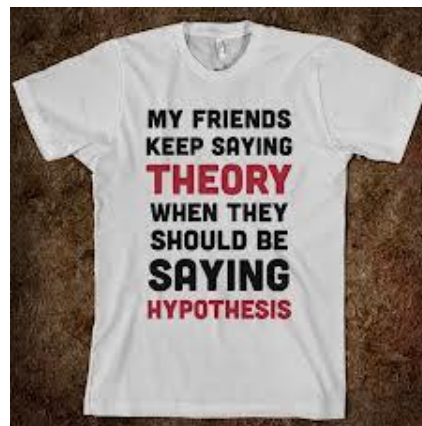
So to recap what the bible says:

- 1) God created all plant life, animal life, and man in three, twenty four hour periods approximately 6,000 years ago.
- 2) God created all living things according to their own “kind” or “species” so that no sustainable or valid cross-breeding can take place that will result in a new, self perpetuating species.

Now let’s move on to what science has to say about where life came from. I’ll do a quick review of the definitions of some of the terms that will be used.



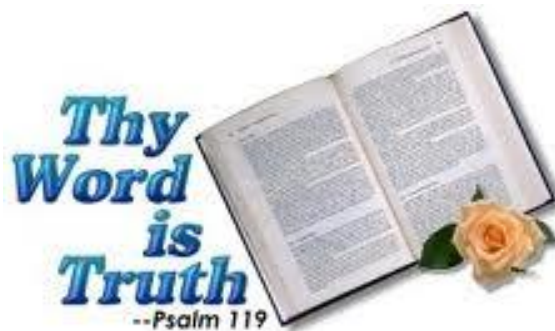
Science



Fact: A fact is something that is true all the time. (Ex. $2+2=4$ or the sun is larger than the earth.)

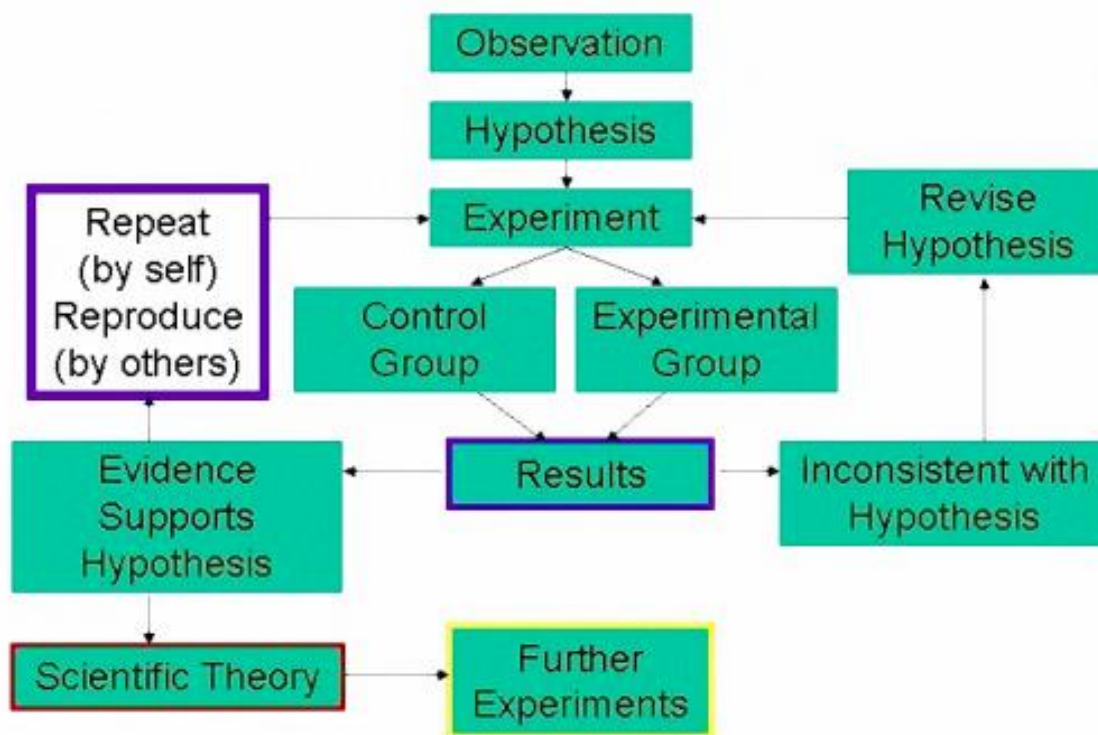
The bible is the most important “truth” we have. Jesus said “...

[John 18:37] For this cause I was born, and for this cause I have come into the world, that I should bear witness to the truth. Everyone who is of the truth hears My voice.



Scientific Method: A method of procedure that has characterized natural science since the 17th century, consisting of systematic observation, measurement, and experimentation, and the formulation, testing, and modification of hypotheses.

The Scientific Method

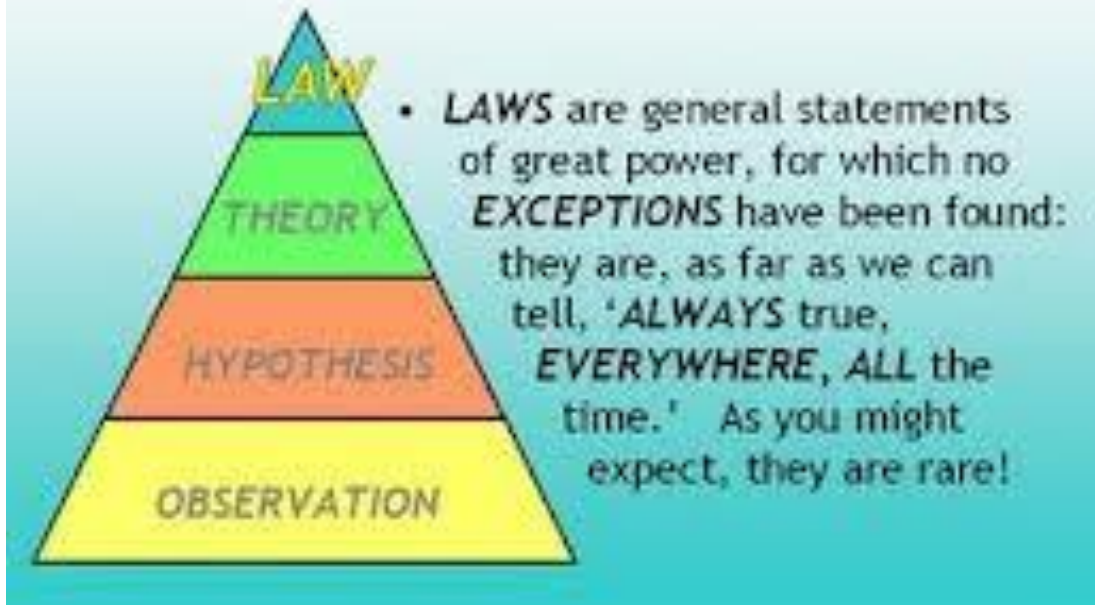


Hypothesis: A hypothesis is an educated guess, based on observation. Usually, a hypothesis can be supported or refuted through experimentation or more observation. A hypothesis can be disproven, but not proven to be true.

Theory: A theory is a hypothesis that has been investigated through experimentation and observation and seems to be correct most of the time. A theory is valid as long as there is no evidence to dispute it. Like hypotheses, theories can be disproven but not proven.

Law: A law generalizes a body of observations. After a theory has been tested for an extended period of time using all possible methods of experimentation and observation and no exceptions have been found, then it is changed to a law.

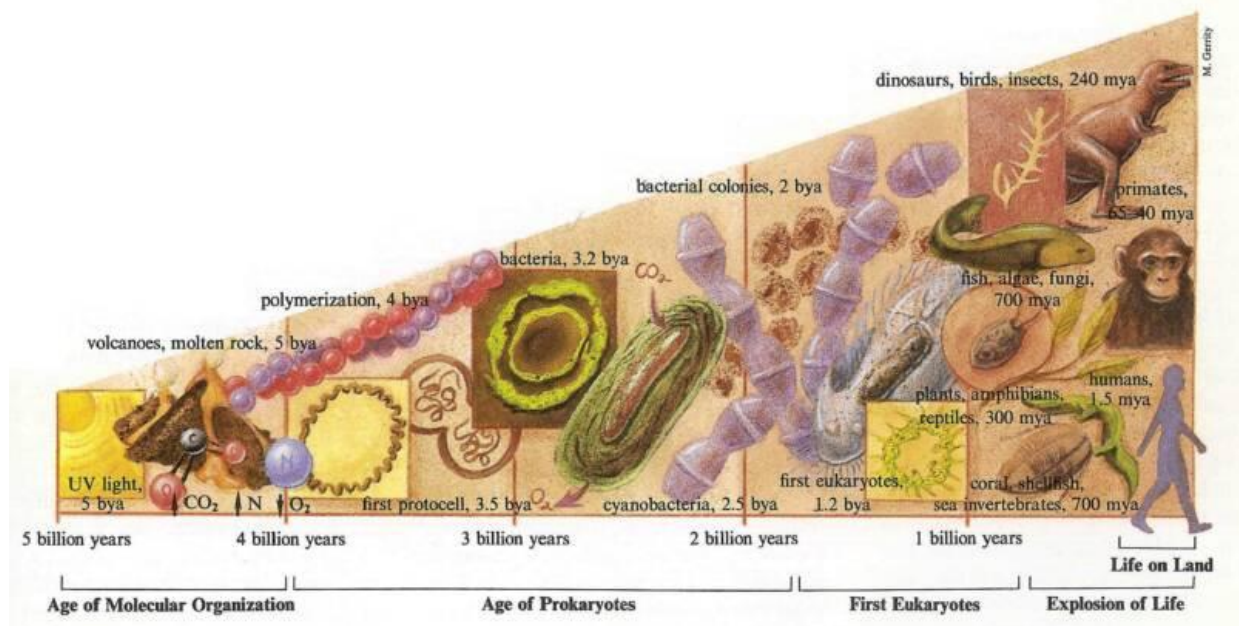
Levels of Scientific GENERALIZATION:



So, the scientific method is the way a scientist forms a hypothesis and through experimentation and observation it may become a theory and eventually a law. During the application of the scientific method, if a hypothesis, theory, or law is shown to be inconsistent or an exception is found, it must be discarded as being wrong and the process needs to start all over again with a new hypothesis.

Very few theories actually make it to be laws. Even when a theory becomes a law, it is still not a fact because a law is only based on observation and experimentation and there is always a possibility that it may be proven wrong.

The Theory of Evolution: Also referred to as “Natural Selection”, is a gradual process in which something changes into a different and usually more complex or better form by numerous, successive, and slight modifications over a very long time span. This theory is mainly attributed to Charles Darwin.



Who Was Charles Darwin?

Charles Robert Darwin was born on February 12th, 1809 in England.



Charles Darwin

Darwin's family religion was "nonconformist Unitarianism" which basically means that they believed in some sort of god but they had an open mind to anything that seemed like a valid explanation to existence. Darwin had various high and low points with respect to religion and his belief in God. He was baptized and went to boarding school at the Church of England. Later, he attended Cambridge University to become an Anglican Clergyman and received his Bachelor of Arts degree.



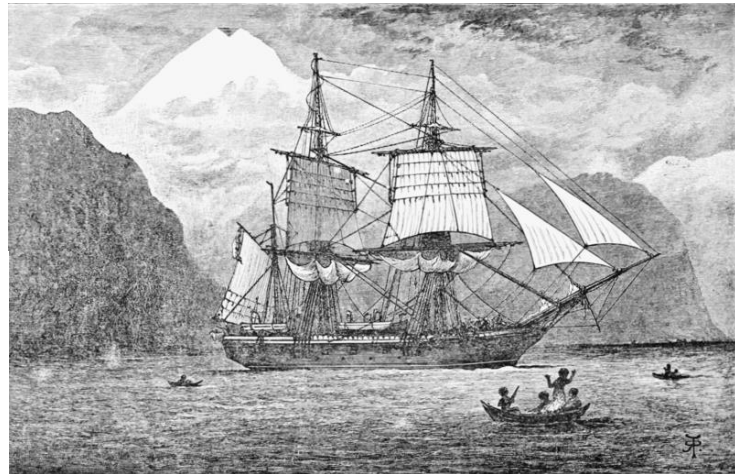
Cambridge University

While at Cambridge university, he became interested in science and was greatly influenced by John Herschel. Herschel and William Paley both sought explanations for life based on laws in nature rather than miracles and divine creation. This was the point where Darwin began turning from God and started turning to his own intellect in order to explain the mysteries of the universe.



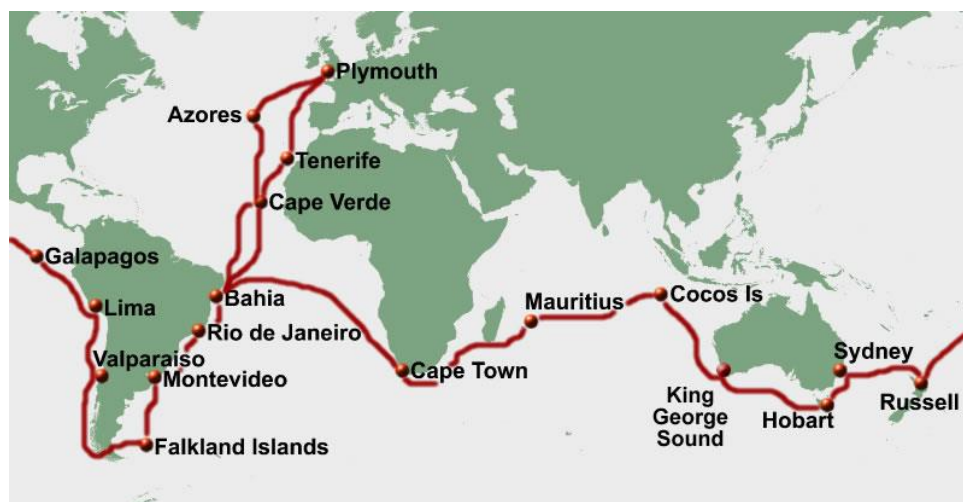
John Herschel and William Paley

Because of Darwin's close friendships with many powerful and influential men, he began questioning the literalness of the bible. In December of 1831, Darwin embarked on a five year journey around the world on the HMS Beagle. This was the beginning of Darwin's turn from God and religion. Captain Robert Fitzroy invited Darwin along on the journey as a companion and to investigate geology as well as make natural history collections.



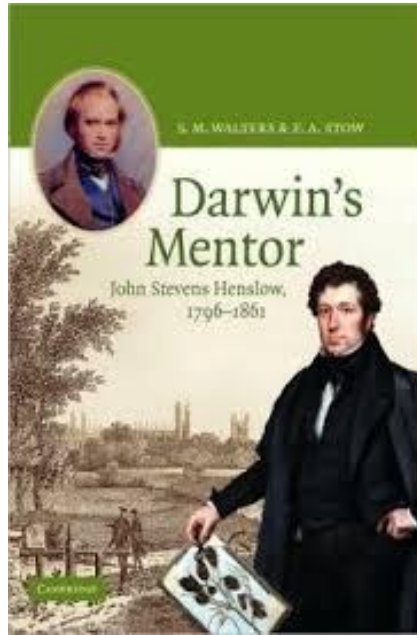
Robert Fitzroy and The HMS Beagle

Darwin was greatly influenced by his nearly five year journey around the world on the HMS Beagle that began in December of 1831. This journey included extensive study of geology and natural history as well as charting the coastlines of South America. He wrote extensively in a journal and collected specimens which he sent back to Cambridge University as circumstances permitted.



Darwin's 5 Year Journey

By the time the Beagle returned on October 2, 1836, Charles Darwin was already a celebrity in scientific circles. His former professor John Stevens Henslow had promoted Darwin by circulating his geological letters. Darwin began to organize his collections, collaborate with other scientists, and write.

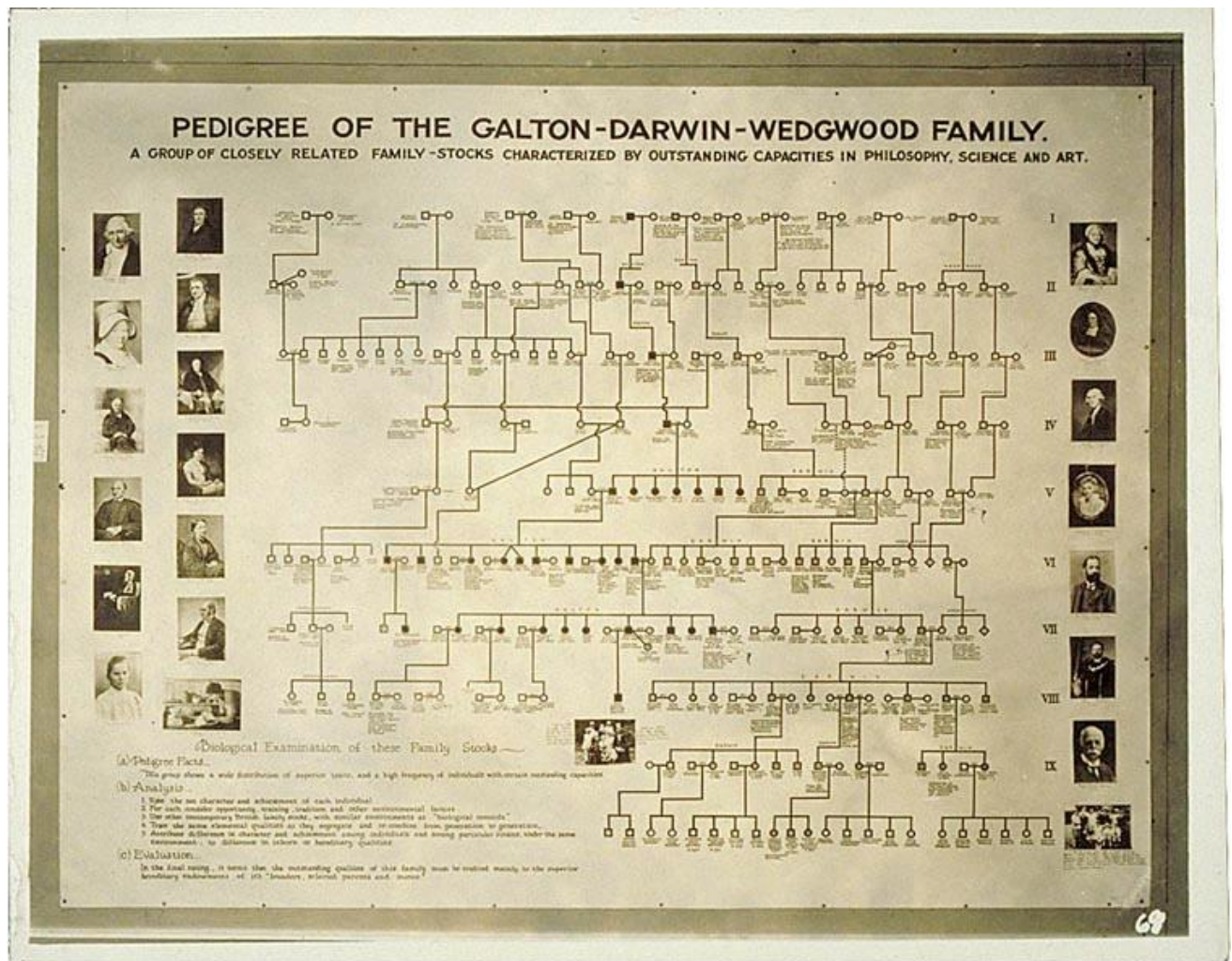


After several years of great notoriety, He married Emma Wedgwood, who was his first cousin, in 1839.



Emma Wedgwood

It was discovered that the Darwins, along with the Wedgwood and Galton families practiced eugenics. Eugenics is a form of purposeful inbreeding of people with desired traits in an attempt to form a superior family line. This has huge implications and supports an elitist agenda that goes back many generations.



Truman State University. Noncommercial, educational use only.

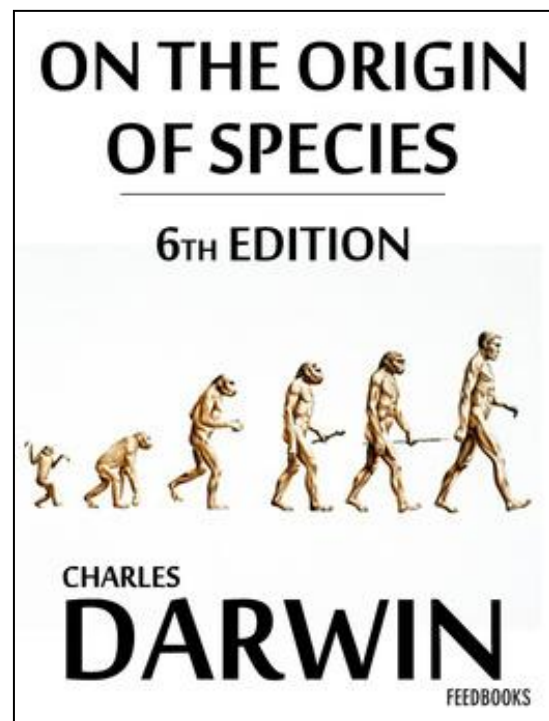
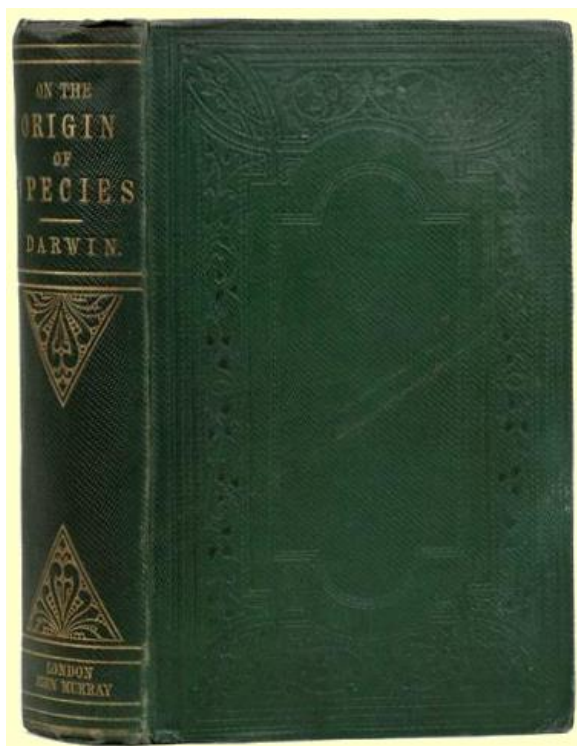
Eugenics Chart Showing Darwin's Family

Charles and Emma had 10 children, two died in infancy and his daughter Annie died at the age of 10. Annie's death devastated Charles and Emma. Darwin was always concerned about the fact that he had married his 1st cousin and felt that inbreeding may have caused the deaths of his children as well as their sicknesses.



Annie Darwin

In 1859, Charles Darwin published “On the Origin of Species” which was the foundational work that defined evolution. This book denied the existence of God and the fact that God created the universe and everything in it.



This book was based entirely on speculation derived from observation of natural processes and it laid out the foundation for what would become known as “The Theory of Evolution”. Charles Darwin usually referred to the theory of evolution as “Natural Selection”.

In the Introduction of his book, Charles Darwin stated that he had very few facts to support his general conclusions that were the foundation for his theory and that he hoped to some day compile and publish facts that could prove his theory true.

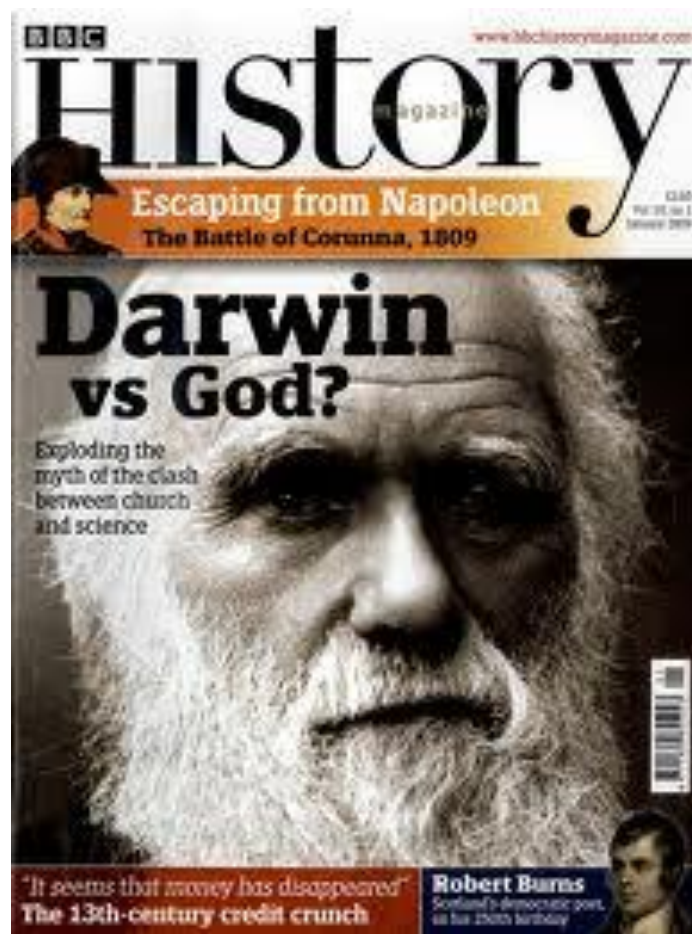
*“This Abstract, which I now publish, must necessarily be imperfect. I cannot here give references and authorities for my several statements; and I must trust to the reader reposing some confidence in my accuracy. No doubt errors will have crept in, though I hope I have always been cautious in trusting to good authorities alone. **I can here give only the general conclusions at which I have arrived, with a few facts in illustration**, but which, I hope, in most cases will suffice. No one can feel more sensible than I do of the necessity of hereafter publishing in detail all the facts, with references, on which my conclusions have been grounded; and **I hope in a future work to do this**. For I am well aware that scarcely a single point is discussed in this volume on which facts cannot be adduced, often apparently leading to conclusions directly opposite to those at which I have arrived. A fair result can be obtained only by fully stating and balancing the facts and arguments on both sides of each question; and this cannot possibly be here done.”* (Charles Darwin, “On the Origin of Species”, 1859)

These facts have never been compiled and published because they don’t exist!



It is clear by the following statement that Darwin had once believed that God created life; however, he had now deemed that as being erroneous.

*“Although much remains obscure, and will long remain obscure, I can entertain no doubt, after the most deliberate study and dispassionate judgment of which I am capable, that **the view which most naturalists entertain, and which I formerly entertained--namely, that each species has been independently created--is erroneous.** I am fully convinced that species are not immutable; but that those belonging to what are called the same genera are lineal descendants of some other and generally extinct species, in the same manner as the acknowledged varieties of any one species are the descendants of that species. Furthermore, I am convinced that Natural Selection has been the main but not exclusive means of modification.”* (Charles Darwin, “On the Origin of Species”, 1859)



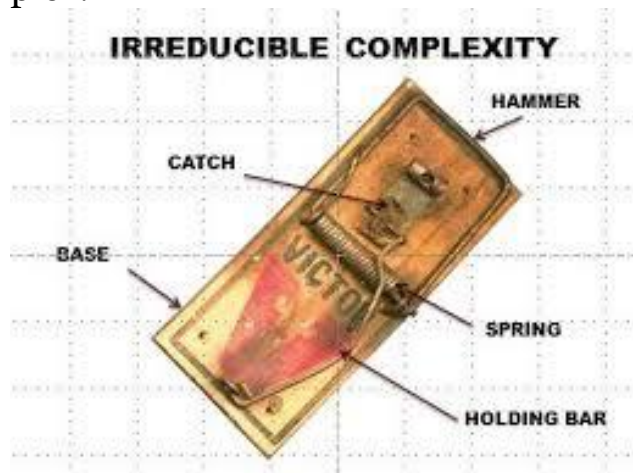
Evolutionists have never found, compiled, or published any facts to advance the theory of evolution to a law. There have been many facts found since Darwin's time that disprove the theory of evolution. Several of Darwin's conclusions have also been specifically proven to be incorrect.

The study of evolution or being an "evolutionist" is not a form of science. This is simply a form of speculation based on observations and opinions. It is similar to 2 drunks who try to come up with the most believable story about what to tell their wives when they get home. Evolution is a devious contrivance of lies and truths in order to support a personal agenda.

I will now move on to prove why the theory of evolution was proven to be wrong many years ago. There are 3 main discoveries that I will focus on to establish this proof.

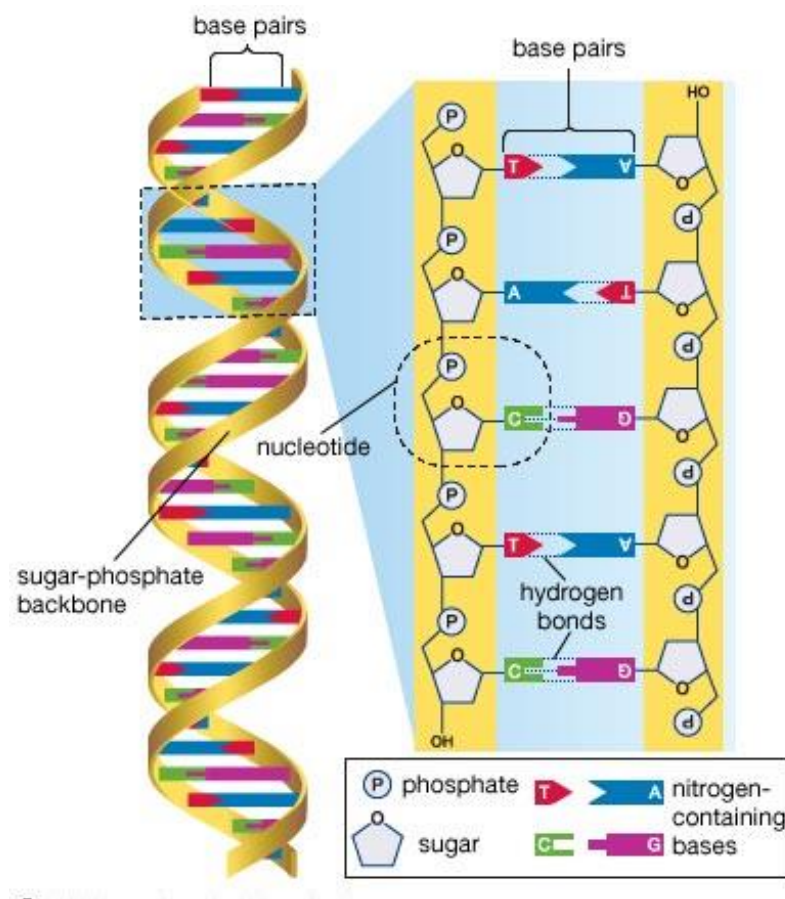


- 1) **Irreducible Complexity** – This is the when a complex mechanism or organism ceases to function properly if any one of its components are removed. In other words, if you take any piece away, it breaks. Specifically, I will focus on how the human cell structure is irreducibly complex.



2) **Intelligent Source Required for Information** – This is the theory that all information must come from an intelligent source. As stated by Dr. Werner Gitt in his book *“In the Beginning Was Information”*:

- a. There is no known law of nature, no known process, and no known sequence of events that can cause information to originate by itself in matter.
- b. When its progress along the the chain of transmission events is traced backwards, every piece of information leads to a mental source, the mind of the sender.



DNA Model

I will focus specifically on the human genome (DNA) and the fact that it is comprised of huge amounts of complex information that needed to come from a creator.

- 3) **No Intermediary Fossil Record Exists**– Assuming evolution is correct, this is the fossil record that should exist between a less evolved species (example – monkey) and a more evolved species (example – humans) that shows the “middle” or intermediate steps of evolution. I will focus on the fact that there are fossils for monkeys and fossils for humans, but there are no fossils for the dozens or possibly hundreds of intermediate stages that would be required for a monkey to evolve to a man.

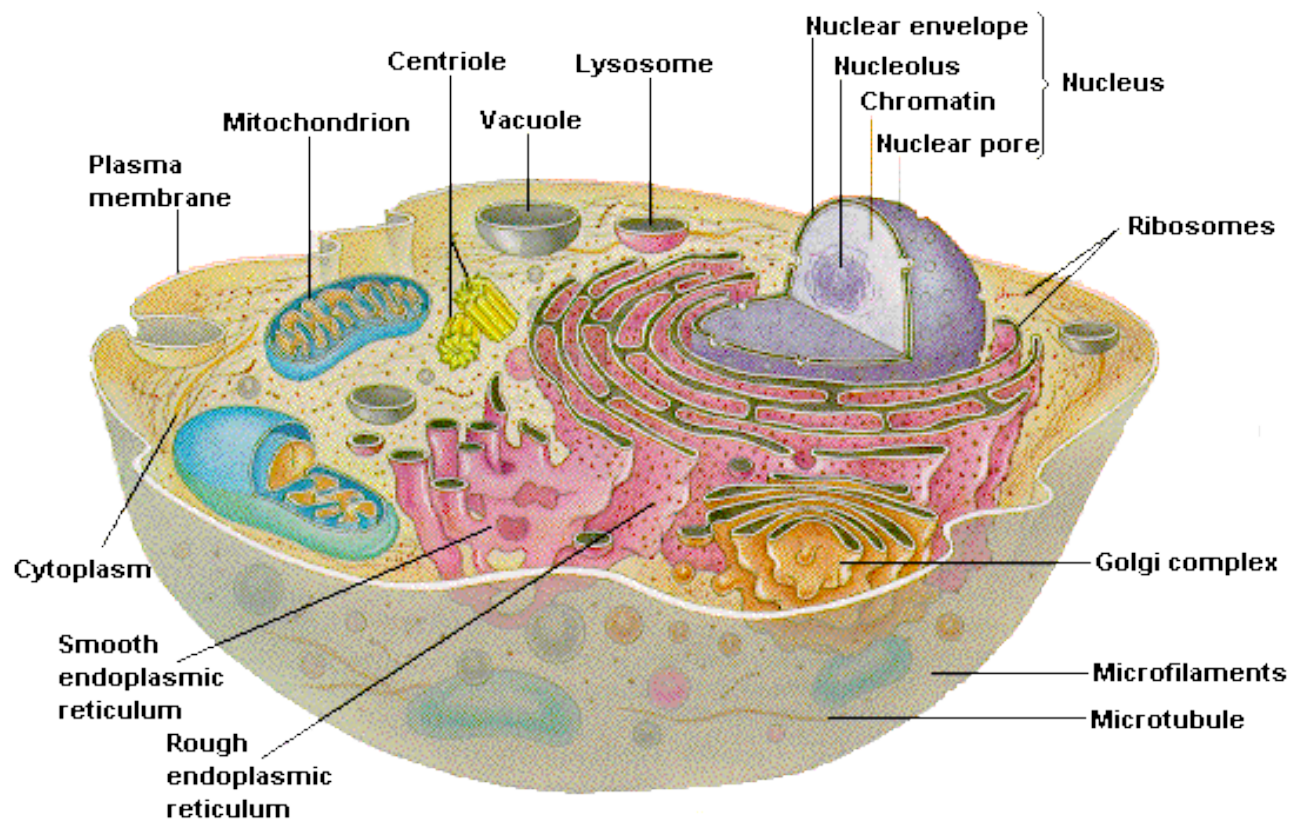


Irreducible Complexity

Charles Darwin Stated:

“If it could be demonstrated that any complex organ existed, which could not possibly have been formed by numerous, successive, slight modifications, my theory would absolutely break down.” (Charles Darwin, “On the Origin of Species”, 1859)

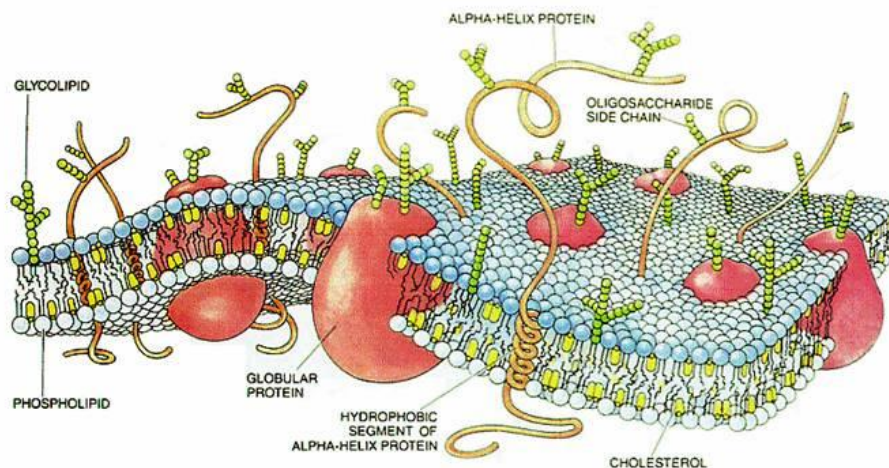
What this means that if anything exists in nature that is irreducibly complex, Darwin’s theory is incorrect. Because the true inner workings of the cell were not understood at Darwin’s time, they were unable to prove this. During Darwin’s time, they were able to see cells but they did not have powerful enough microscopes to see the inner workings of the cell. They believed cells were composed of a jelly-like substance or a protoplasm.



Typical Human Cell

Let's take a look at the main parts within a typical living cell:

- 1) Cell Wall – Support and Protection (Plant Cells Only)
- 2) Plasma (Cell) Membrane – Defines the cell boundary and regulates the passage of molecules into and out of the cell.
- 3) Nucleus – Storage of genetic information as well as the synthesis of DNA and RNA.
- 4) Nucleolus – Ribosomal subunit formation.
- 5) Ribosome – Protein Synthesis.
- 6) Endoplasmic Reticulum (ER) – Synthesis and/or modification of proteins and other substances and distribution by vesicle formation.
- 7) Rough ER – Protein synthesis.
- 8) Smooth ER – Various processes including lipid synthesis in some cells.
- 9) Golgi Apparatus – Processing, packaging, and distribution of proteins and lipids.
- 10) Lysosome – Intracellular digestion.
- 11) Vacuole and Vesicle – Storage of substances.
- 12) Peroxisome – Various metabolic tasks.
- 13) Mitochondrion – Cellular respiration.
- 14) Chloroplast – Photosynthesis (Plant Cells Only)
- 15) Cytoskeleton – Shape of cell and movement of its parts.
- 16) Cilia and Flagella – Movement of cell.
- 17) Centriole – Formation of basal bodies (base of anchoring structures for flagella) (Animal Cells Only).

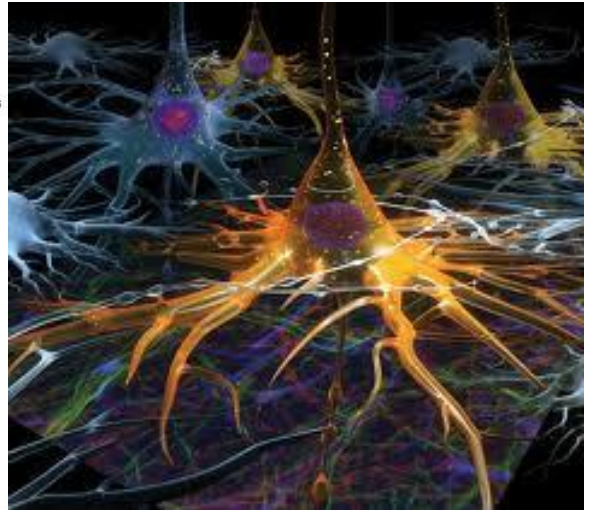
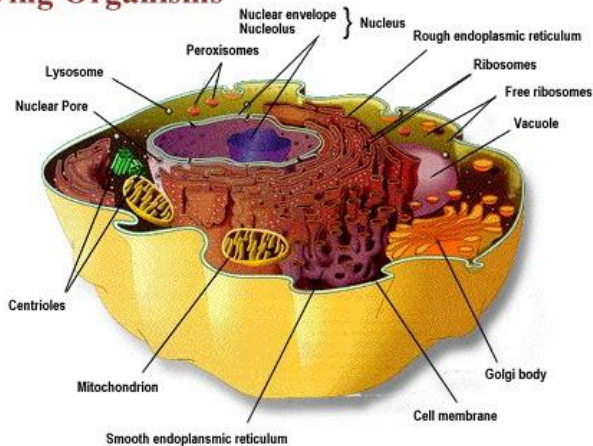


Typical Cell Wall

Please realize that each one of these 17 cell structures is actually its own incredibly complex factory filled with dozens if not hundreds of smaller and

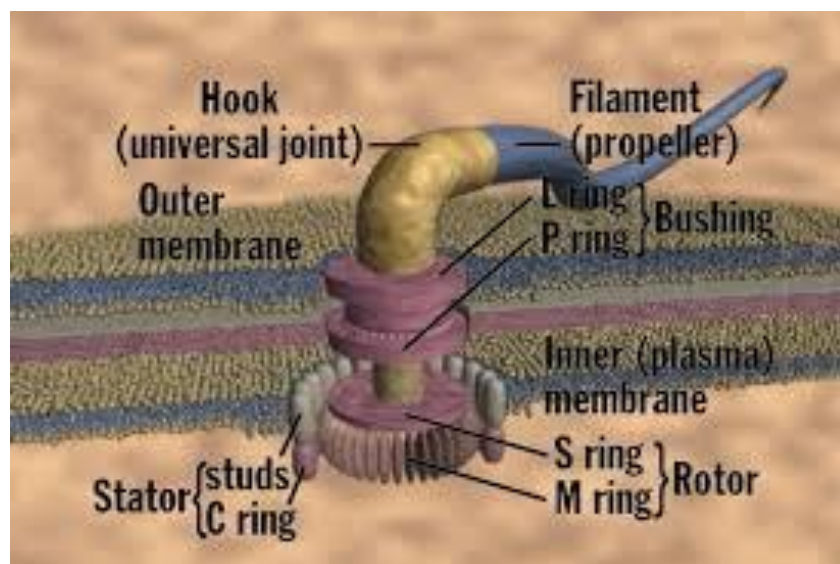
yet more complex parts that are creating, storing, and regulating specifically required chemicals and molecular structures for use within the cell and/or export to other cells for supporting other processes of life.

Living Organisms



Cell Parts and Synapse Connections

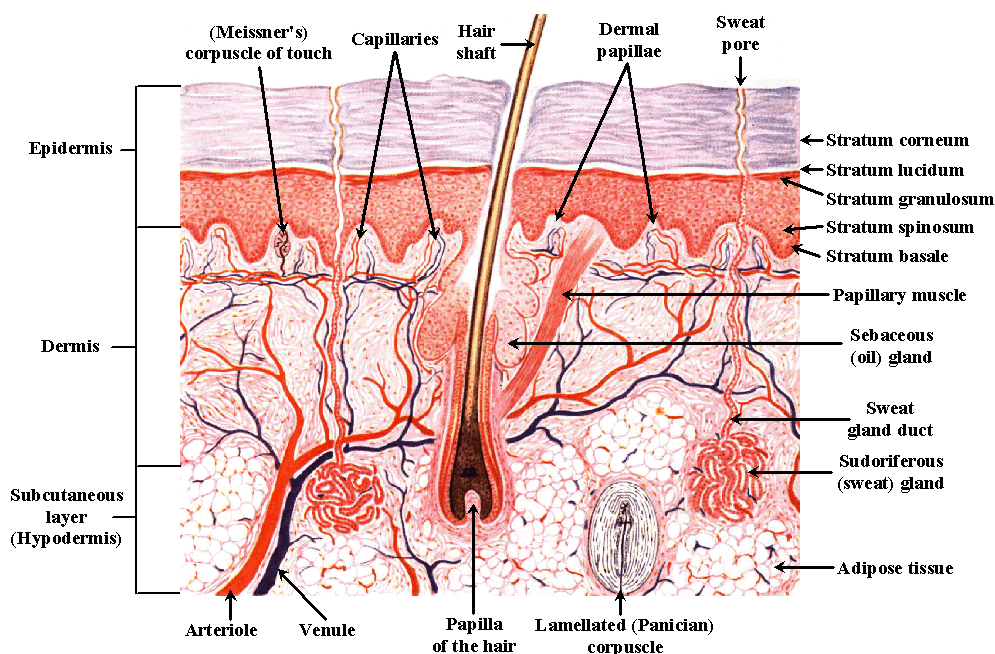
If any one of these cellular pieces was taken away, not only would that cell cease to function but also any other external cells that required support from this cell type would also cease to function. What this means is that the entire cell structure had to be **Created** at the same moment and that it could have never evolved in successive steps. There was also absolutely no appreciation of the incredibly complex “machines” that all work together within each cell.



Molecular Machine (Flagella)

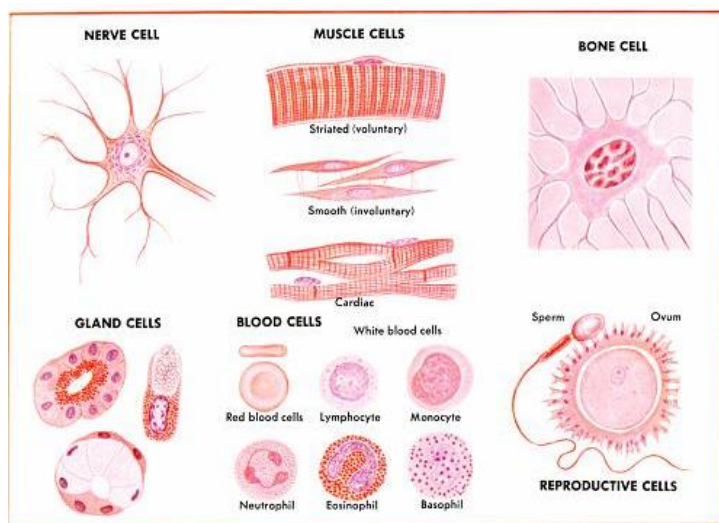
It is absurd for someone to be intelligent enough to understand the complexity of living cells but to not understand the statistical impossibility of something like this just accidentally coming into being.

[Romans 1:22] Professing to be wise, they became fools,



Skin Layers

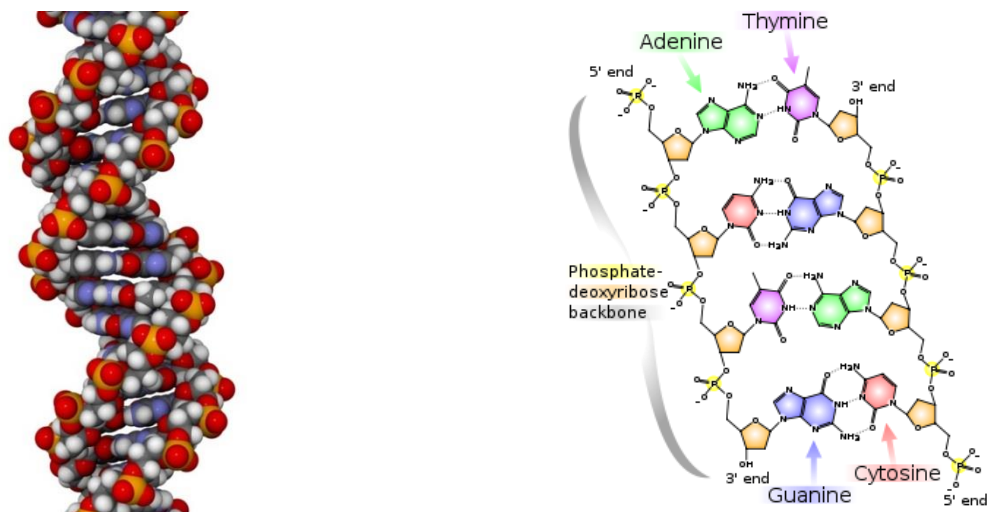
NOTE: There are an estimated 50 to 100 Trillion cells in the average adult human body depending on the size of the person. Each cell plays an important role to support the function of that body.



Types of Cells

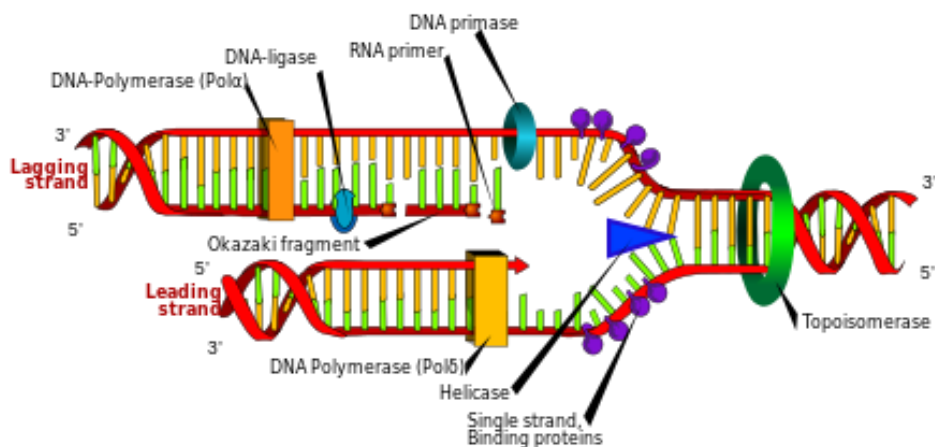
Intelligent Source Required for Information

It is absolutely necessary for all information (structured data) to come from an intelligent source. At the time when Darwin was alive, the workings of the human cell and the existence of DNA were unknown. Since DNA was discovered, it has been amazing scientists and others as to the incredible amount of complex data that is contained within a single strand of DNA.



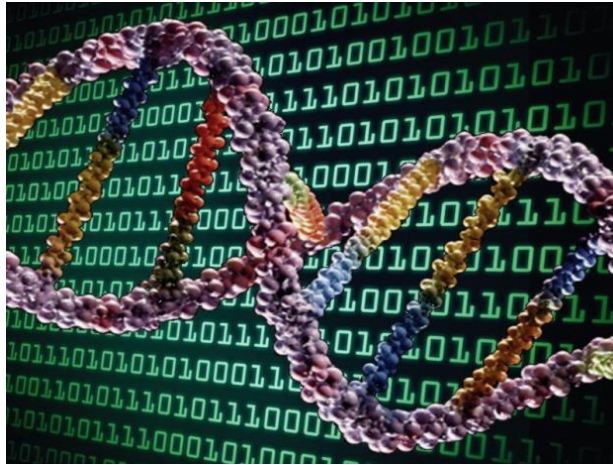
DNA Representations

DNA is located in the nucleus of every living organism's cell. There are incredible "micro-machines" within the cell and the bodies of living organisms that are capable of breaking apart, copying, transporting, and re-assembling pieces of information that is contained within a strand of DNA.



DNA Replication

The complete Human genome consists of approximately 750 million bytes of information, in the form of chromosome pairs, which is used to build all of the parts required for a fully functional human body.

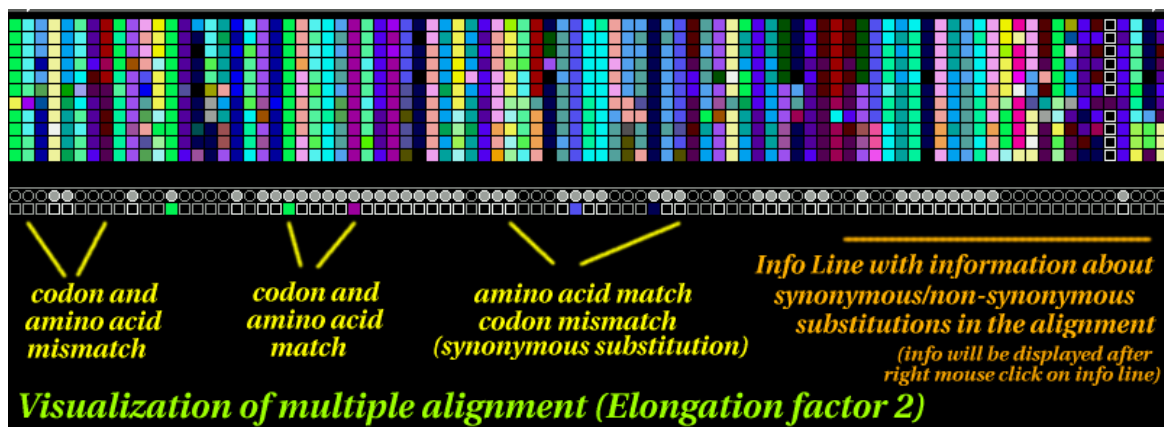


- There are approximately 750,000,000 bytes of information in a set of human DNA.
- There are approximately 2000 bytes of information on an 8½” x 11” piece of writing paper.
- This equates to 375,000 pages of complex information contained in the human genome.

QUESTION: Where did all of that wonderful information come from?

ANSWER: From the Almighty GOD of the universe!

[Psalms 139:14] I will praise You, for I am fearfully and wonderfully made; Marvelous are Your works, And that my soul knows very well.

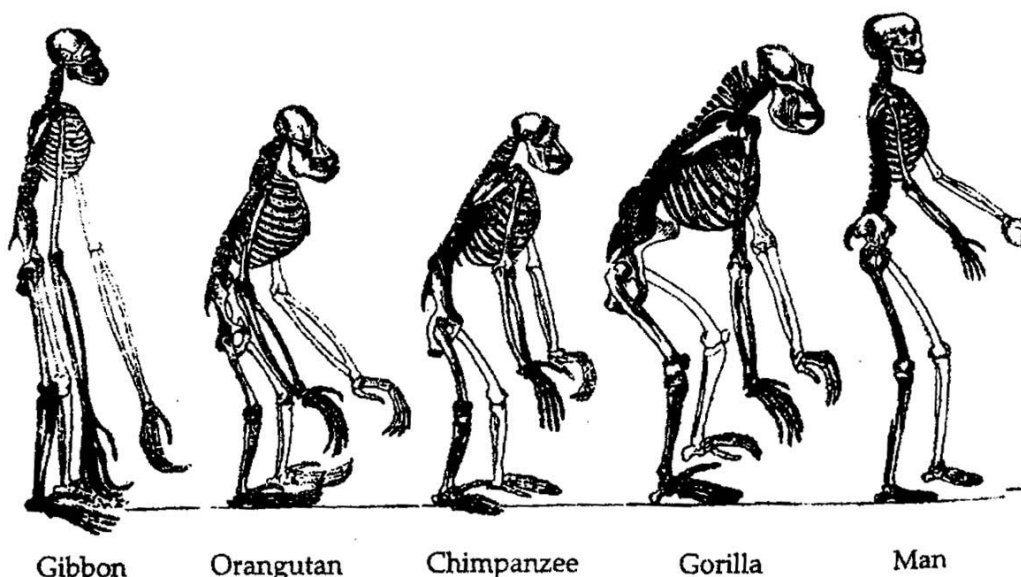


No Intermediary Fossil Record Exists

If the theory of evolution was correct, a huge fossil record should exist between a less evolved species (example – monkey) and the more evolved species (example – humans) that shows the “middle” or intermediate steps of evolution. (and you would think there would be no more monkeys?)

Charles Darwin Stated:

*“The main cause, however, of innumerable intermediate links not now occurring everywhere throughout nature depends on the very process of natural selection, through which new varieties continually take the places of and exterminate their parent-forms. But just in proportion as this process of extermination has acted on an enormous scale, so must the number of intermediate varieties, which have formerly existed on the earth, be truly enormous. Why then is not every geological formation and every stratum full of such intermediate links? **Geology assuredly does not reveal any such finely graduated organic chain; and this, perhaps, is the most obvious and gravest objection which can be urged against my theory.** The explanation lies, as I believe, in the extreme imperfection of the geological record.”* (Charles Darwin, “On the Origin of Species”, 1859)



(Falsified lineup made by reducing human and enlarging gibbon)

What this means is that taking the example of humans evolving from monkeys, the monkey would be the less evolved step, then there would be dozens or maybe hundreds of “intermediate” steps, then it would finally become the humans that exist today. There are fossils for monkey bones, and there are bones for humans; however, there are no fossils or bones for any of the “intermediary” or middle steps. This is because God created monkeys and God created man as two separate and distinct species.

What about “caveman” bones? Aren’t they the intermediary fossil link?

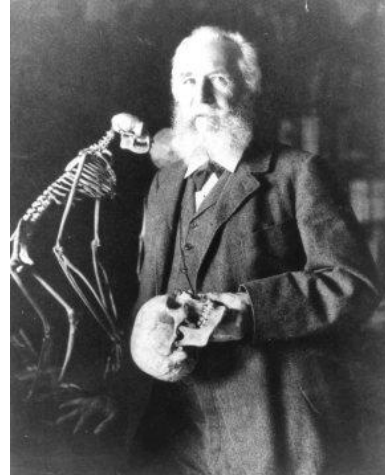
Every picture ever drawn and every life size model ever sculpted that depicts a “cave man” or “monkey man” have been purely artwork based on absolutely nothing real. There have been no “cave man” skulls ever found. All the skulls have been proven to be human skulls or purposeful fraud. It is absolutely impossible for an ethical artist to create pre-historic depictions of “cavemen” from the meager evidence presented.



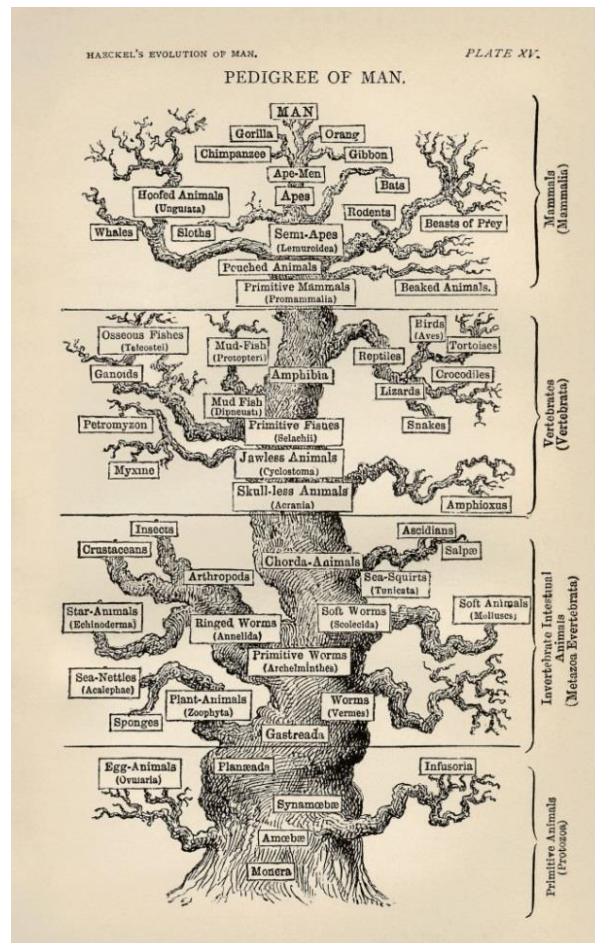
Falsified Caveman Scene

Ernst Haeckel was a zoologist and an accomplished artist and illustrator who lived from 1834 to 1919. He was also one of the most obscene con

artists of all times. Haeckel purposely used his artistic skills to create fraudulent illustrations in an attempt to become famous and to support evolution.



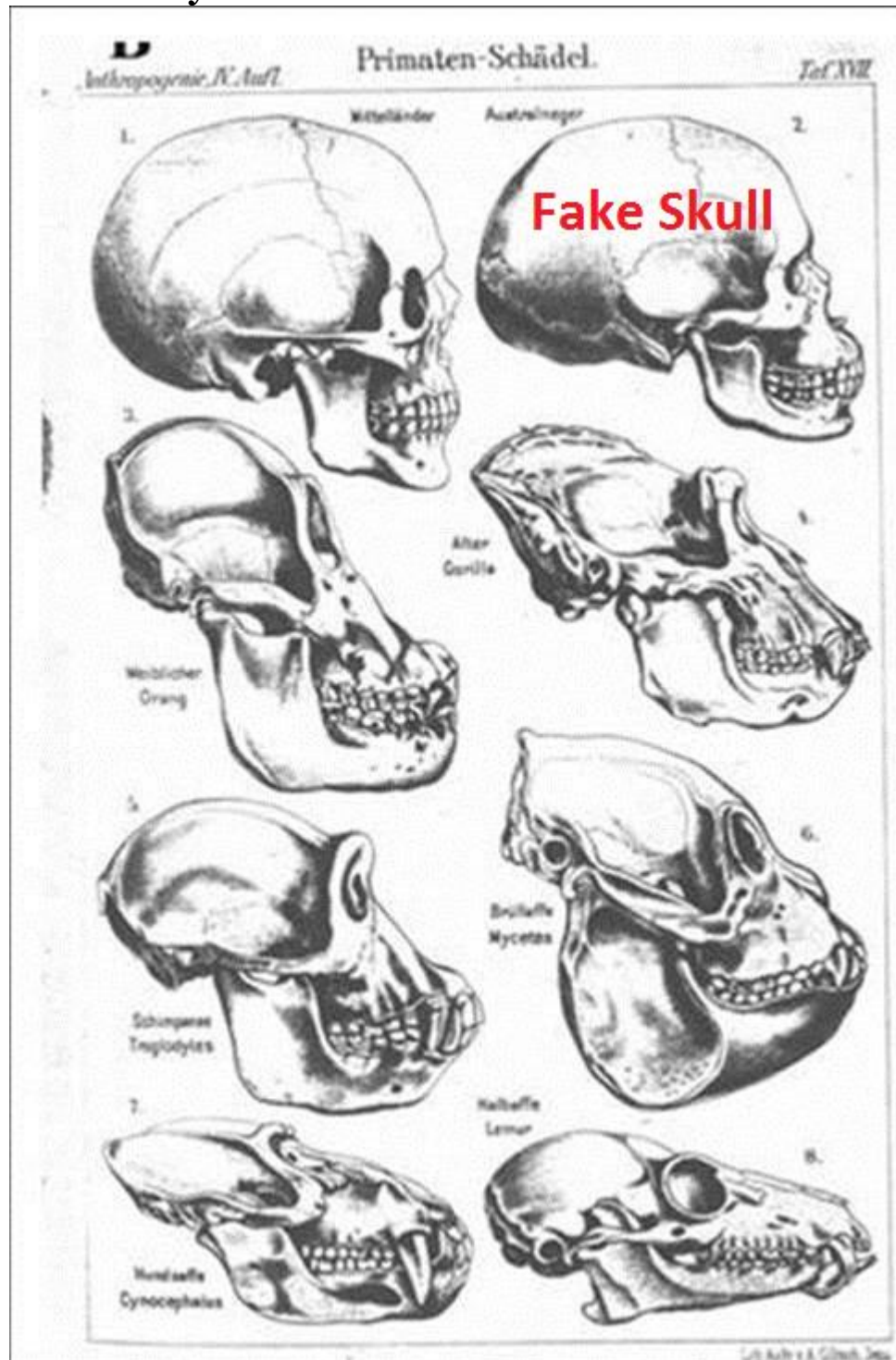
Ernst Haeckel



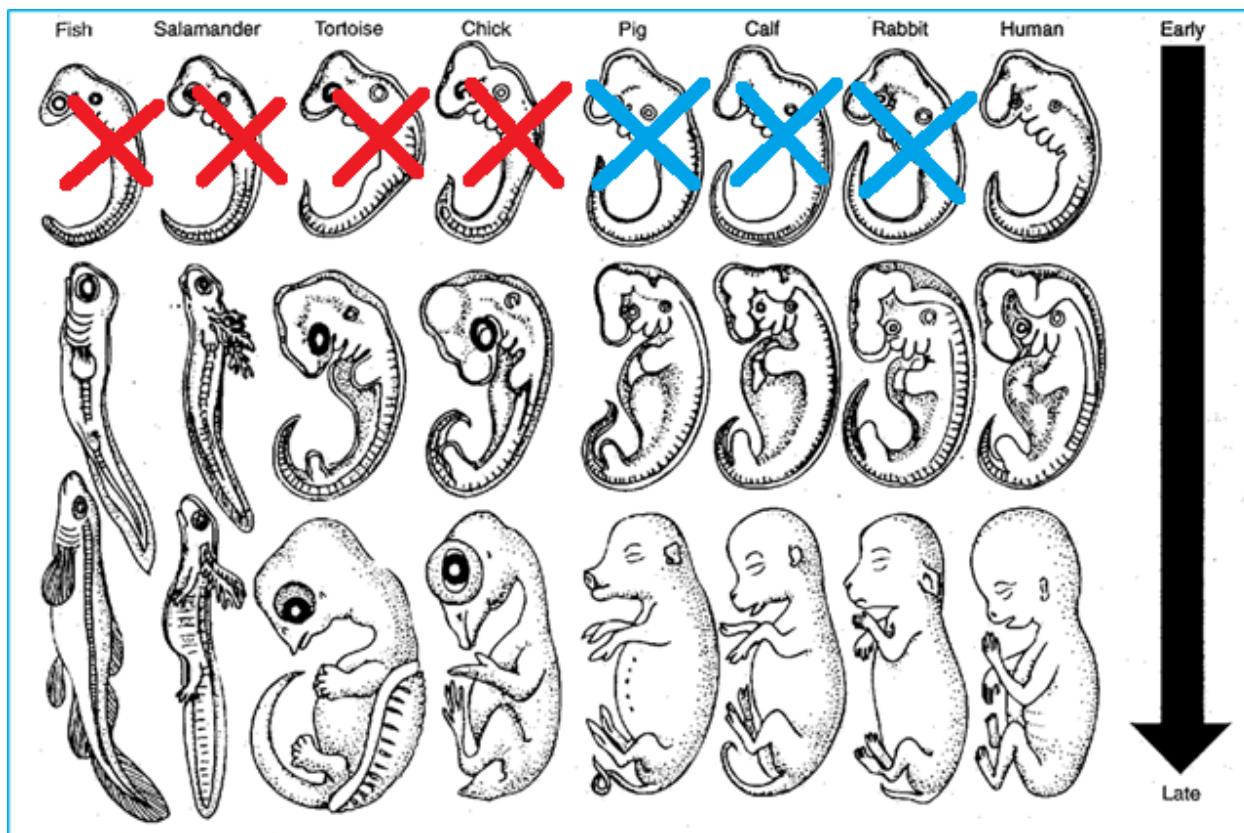
Haeckel's "Tree of Life"

Drawing from (Ernst Haeckel's, "Evolution of Man", 1920) presents a skull labeled "Australian Negro" as an intervening evolutionary stage between the "Mediterranean" skull and those of the lower primates.

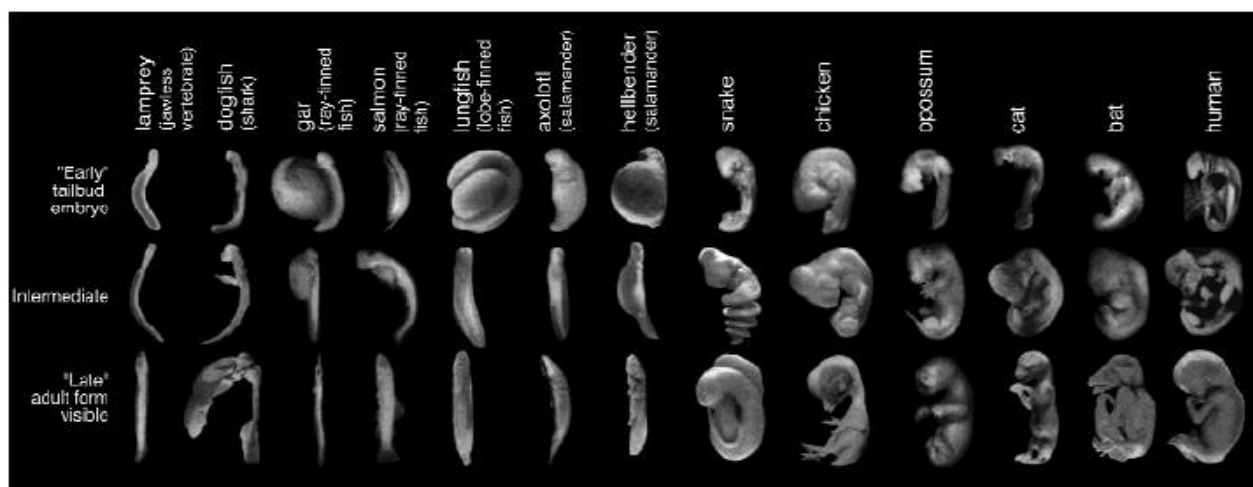
This is very nice artwork but it is scientific FRAUD!



Drawing from (Ernst Haeckel's, "Evolution of Man", 1920) presents a comparison of embryos from different species. These were later proven to be fraudulent.



Fish, Salamander, Tortoise, Chick = Fake Drawing
Pig, Calf, Rabbit = Not Early Stage of Development



Real Embryo Pictures

Haeckel's fraudulent illustrations are just the tip of the iceberg when it comes to evolutionary fraud. The most damaging and heinous frauds have occurred in the field of paleoanthropology.

Paleontology is the scientific study of prehistoric life (dinosaurs) and Anthropology is the study of of humankind, past and present.

Paleoanthropology is the study of "cavemen" and is a fictitious field of study created to make inept or criminal men rich and famous.



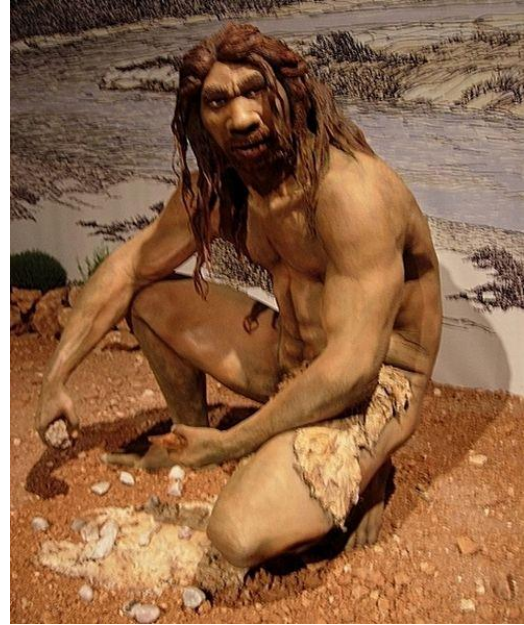
Falsified Caveman Model

Let me be very clear in stating that every "intermediary" fossil of man that has ever been found, in other words "caveman fossils", have been proven to be incompetent mistakes or purposeful frauds.

Typically, a single bone or very few bone fragments are found and then an artist is coerced into drawing a rendition of what the caveman might have looked like. The person who found the bone(s) is always the one directing the artist and in many cases they are the artist.

There are cases of ape bones being mixed with human bones (Piltdown), bones from humans being misrepresented through artwork (Heidelberg, New Guinea, Cro-Magnon), bones from an arthritic man being misrepresented (Neanderthal), and even a pig tooth that was built up into an entire Nebraska Man.

Heidelberg Man – A partial skull discovered near Heidelberg in Germany in 1907 and named by Otto Schoetensack. Later proven to be the skull of a normal human.

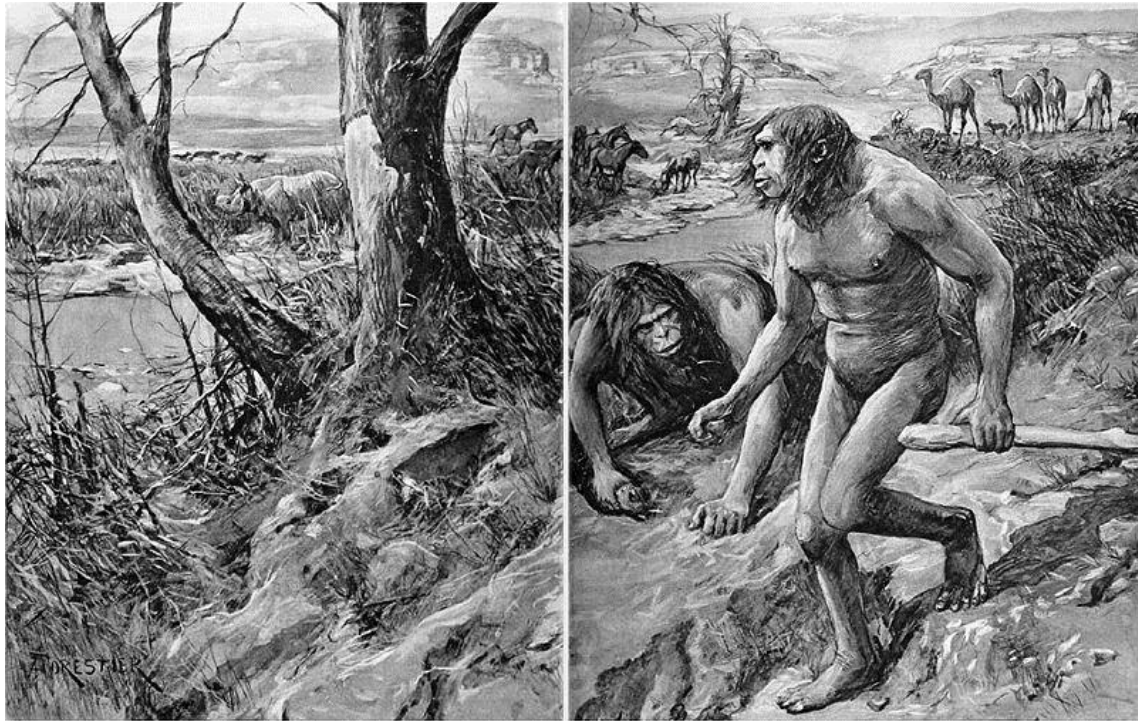


Heidelberg Man Skull and Faked Scene

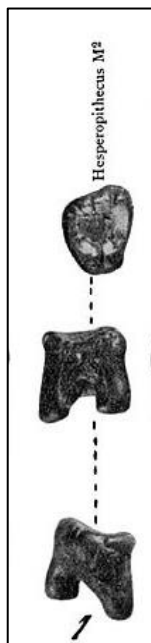


Incredible Waste of Time and Money

Nebraska Man – An entire body was artistically and fraudulently built up from a single tooth. the tooth was later proven to be from an extinct form of bore.



Totally Fraudulent Nebraska Man Scene



Original Boar Tooth and Extinct Boar

Piltdown Man – Human skull fragments and a partial ape jawbone were put together to form a purposeful fraud. The first fragments of the Piltdown skull were found in 1908 by estate workers digging in the grounds of Barkham Manor at Piltdown.



Barkham Manor Grounds at Piltdown

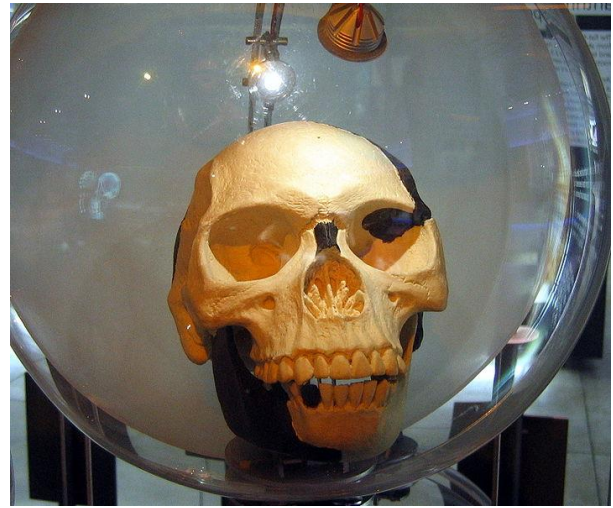
The skull fragments were given to Charles Dawson who represented the owners of the estate. Dawson searched the site and gathered up more pieces of the skull.



Putting on a Show for the Photographer

Dawson (left) contacted Arthur Smith Woodward (right) (1864-1944), who was a paleontologist and in charge of Geology at the British Museum (Natural History Museum) in London.

An apelike jawbone fragment was supposedly “found?” in the area and pieced together with the skull fragments.



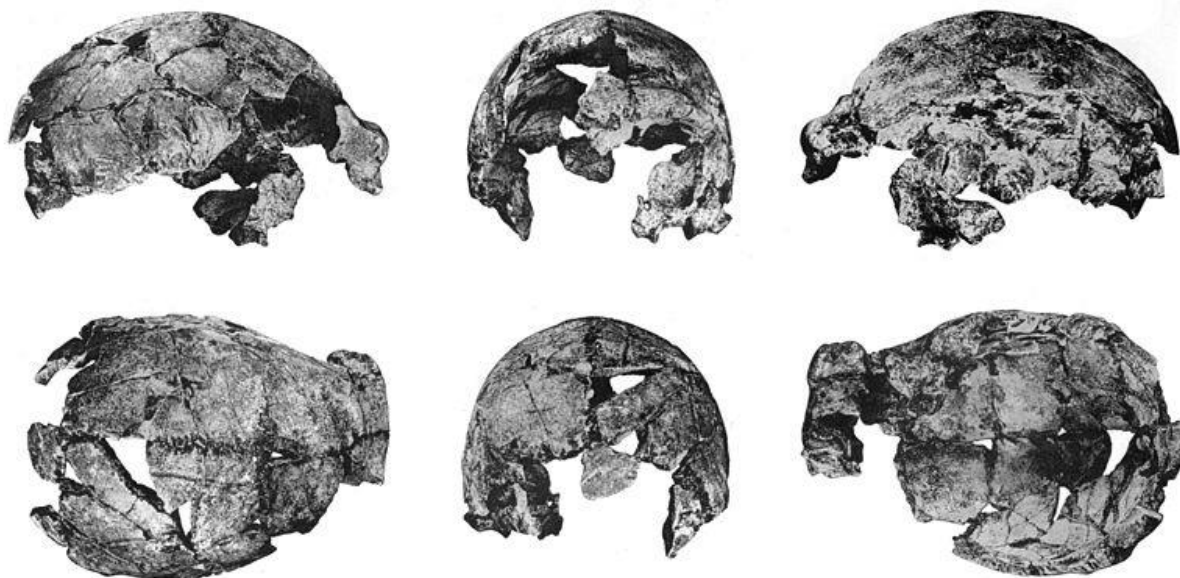
Original Jaw Fragment and Skull Created From it

The “Piltdown” location became a party zone for reporters and geologists making both Dawson and Woodward famous.



Piltdown Became a Real Geologist Wonderland

Peking Man – Supposedly 300,000 to 500,000 year old skull fragments were found in a cave near Peking China in a 1923 to 1927 excavation.



Between 1929 and 1937 many more bone fragments were found in the cave. Most of the study on these fossils was conducted by Davidson Black until he died in 1934. The original fossils disappeared in 1941 during World War II leaving only casts and written descriptions.



The Skull Has no face...That Didn't Stop The Artist!

Neanderthal Man – Partial skulls and bone fragments found in a cave in Belgium in 1829 by Philippe-Charles Schmerling. They were estimated to be between 30,000 and 45,000 years old.



Philippe Schmerling and The Cave in Belgium



All of the bones have been proven to be human. Countless thousands of dollars have been spent creating fantasy scenes and artificial models to promote these mistaken cave men (and women?).

Cro-Magnon Man – Louis Lartet (a French geologist) discovered the first five skulls of this type in a rock shelter named Abri de Crô-Magnon in 1868 .



Louis Lartet and the Rock Shelter (Cro-Magnon)

Elaborate migration patterns and cultural scenes have been created in order to support these specimens.

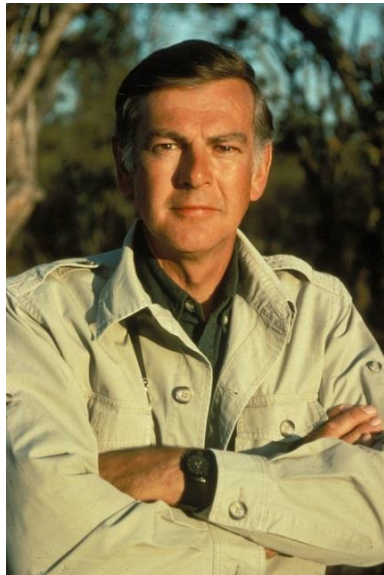


The Original Cro-Magnon Skull Another Artistic Fantasy

Elaborate migration patterns and cultural scenes have been created in order to support these specimens. All of the skulls have been proven to be human and not of any special type.

“Lucy”

One of the greatest frauds ever committed was (and still is) “Lucy”. The bone fragments shown above were found in 1974 by Donald Johanson (excavation team leader) in Ethiopia. These bone fragments were found over a huge geographic area and most have been proven to be non-hominid bones (not related to man) and they have also been shown to come from more than 30 individual skeletons.

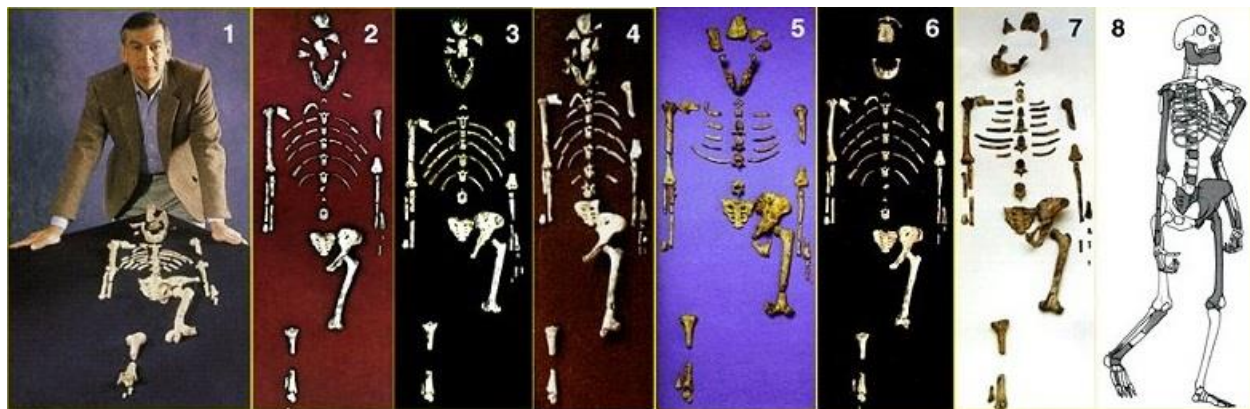


Donald Johanson and the Lucy Bones

These elaborate scenes were fabricated from the minimal bone fragments.

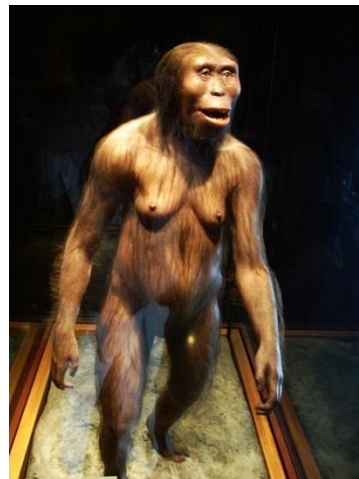


If you look closely at the 8 photographs, you will notice that none of them are presented the same. You would think something supposedly this important would be presented consistently.



The above “fabrications” were presented in the following publications:

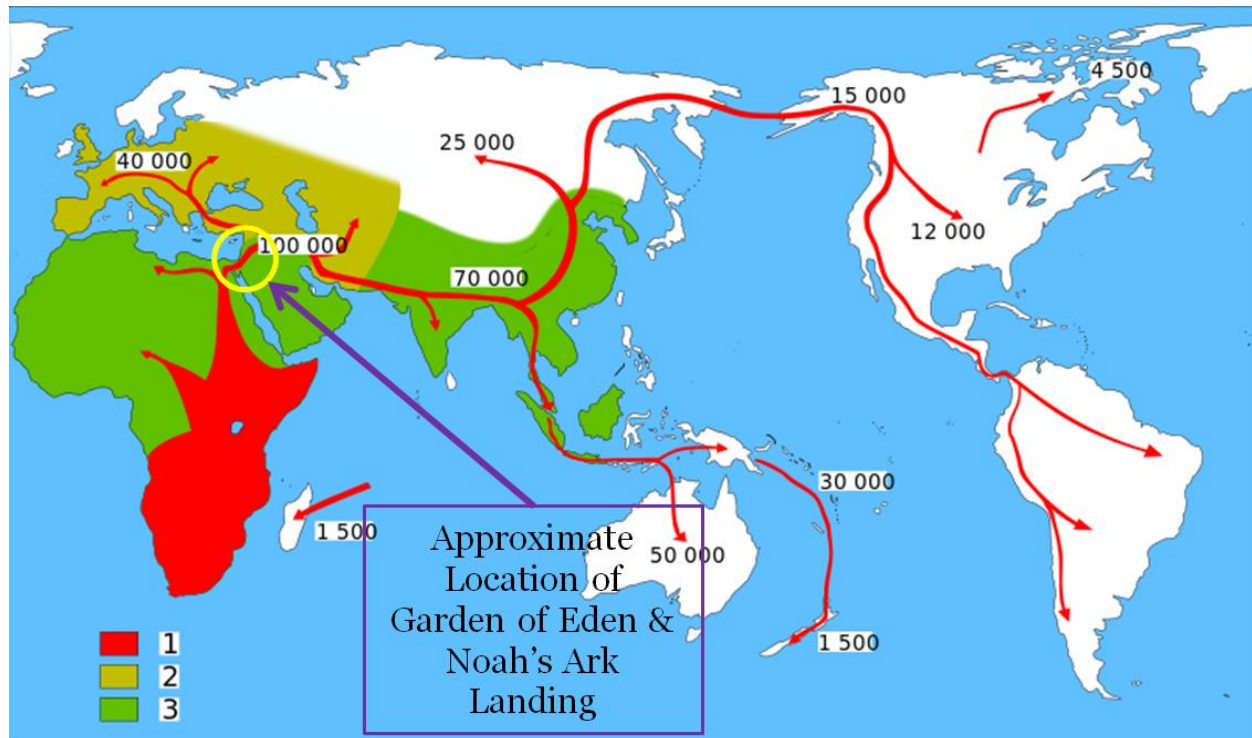
- 1) “Lucy, The Beginnings of Humankind” by Donald Johanson, 1981
- 2) “Age of Mankind”, Author Unknown
- 3) “Origins”, National Geographic, December 1976
- 4) “Human Origins and Evolution”, David R. Pilbeam, 1983
- 5) “The Illustrated History of Early Man”, John Haywood, 2000
- 6) “Humankind Emerging”, National Geographic, 1996
- 7) “Human Origins The Search For Our Beginnings”, Herbert Thomas, 1995
- 8) “Cambridge Encyclopedia of Human Evolution”, 1992



It is truly sad that people are so lost they would fabricate these.

History of Human Migration

It's not surprising that the migration estimates of human beings from the beginning of history basically point to the area thought to be the location of the biblical garden of Eden as well as Mt. Ararat where Noah's Ark landed.



Conclusion

Since the Egyptians and Babylonians, Satan has used lies and corrupt men to suppress the truth about God and creation. There have been several different forms of evolutionary “thought” throughout the centuries. Both Hindus and Buddhists believe that based on the quality of life you live, you may evolve into a greater life form or devolve into an animal through a reincarnation process. Mormons believe that God evolved from a simpler life form over billions of years and progressive reincarnations and that everyone can evolve into a god if you work hard enough.

When we are born, God gives us all an internal understanding of Him and His creation; However, as we grow older and allow the lies of the world to influence us, we drift further and further from the truth of God and creation. We try to explain things with our own intelligence and attempt to dismiss God so that we do not need to have any accountability.

[Romans 1:18-23] For the wrath of God is revealed from heaven against all ungodliness and unrighteousness of men, who suppress the truth in unrighteousness, because what may be known of God is manifest in them, for God has shown it to them. For since the creation of the world His invisible attributes are clearly seen, being understood by the things that are made, even His eternal power and Godhead, so that they are without excuse, because, although they knew God, they did not glorify Him as God, nor were thankful, but became futile in their thoughts, and their foolish hearts were darkened. Professing to be wise, they became fools, and changed the glory of the incorruptible God into an image made like corruptible man--and birds and four-footed animals and creeping things.

For non-Christians:

I pray with all my heart that this commentary has helped shine some light on the lies that are being told to us all. Let me assure you that Jesus Christ is real, He is God, He created the universe and everything in it, and He loves you so much that He gave His life to help keep you from eternal torment in Hell.

There is only one way to heaven and it is a free gift from God and not something that you can earn.

[John 3:16] For God so loved the world that He gave His only begotten Son, that whoever believes in Him should not perish but have everlasting life.

All you need to do is realize that you are a sinner and that there is nothing you can do to fix that. Then ask Jesus to forgive you for your sins and to come into your heart and life to become your personal Lord and Savior.

For Christians:

It is important for us to understand the lies and darkness of the world around us so that we might be able to help non-believers come to the truth of Jesus Christ. Love your neighbor as yourself and don't judge people for believing in evolution. We need to be able to converse intelligently with non-believers and we need to always do it in a meek and humble manner. Please pray for God to give you wisdom and humbleness so that you may

help to open the eyes of non-believers to the love and truth of Jesus Christ our Lord and Savior.

[1 Peter 3:15] But sanctify the Lord God in your hearts, and always be ready to give a defense to everyone who asks you a reason for the hope that is in you, with meekness and fear;



Anti-Evolution League Headquarters 1924