

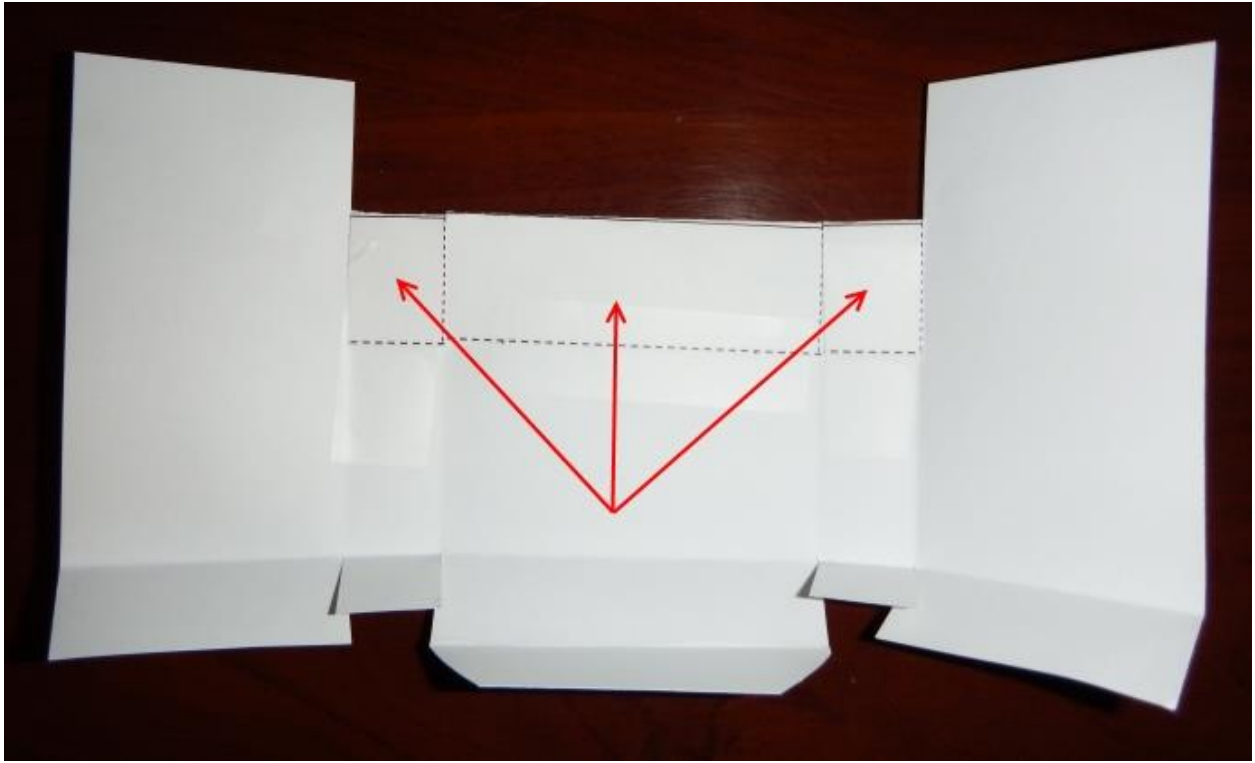
STEP 5: Cut the tract holders out with scissors removing the 4 areas labeled "DISCARD".



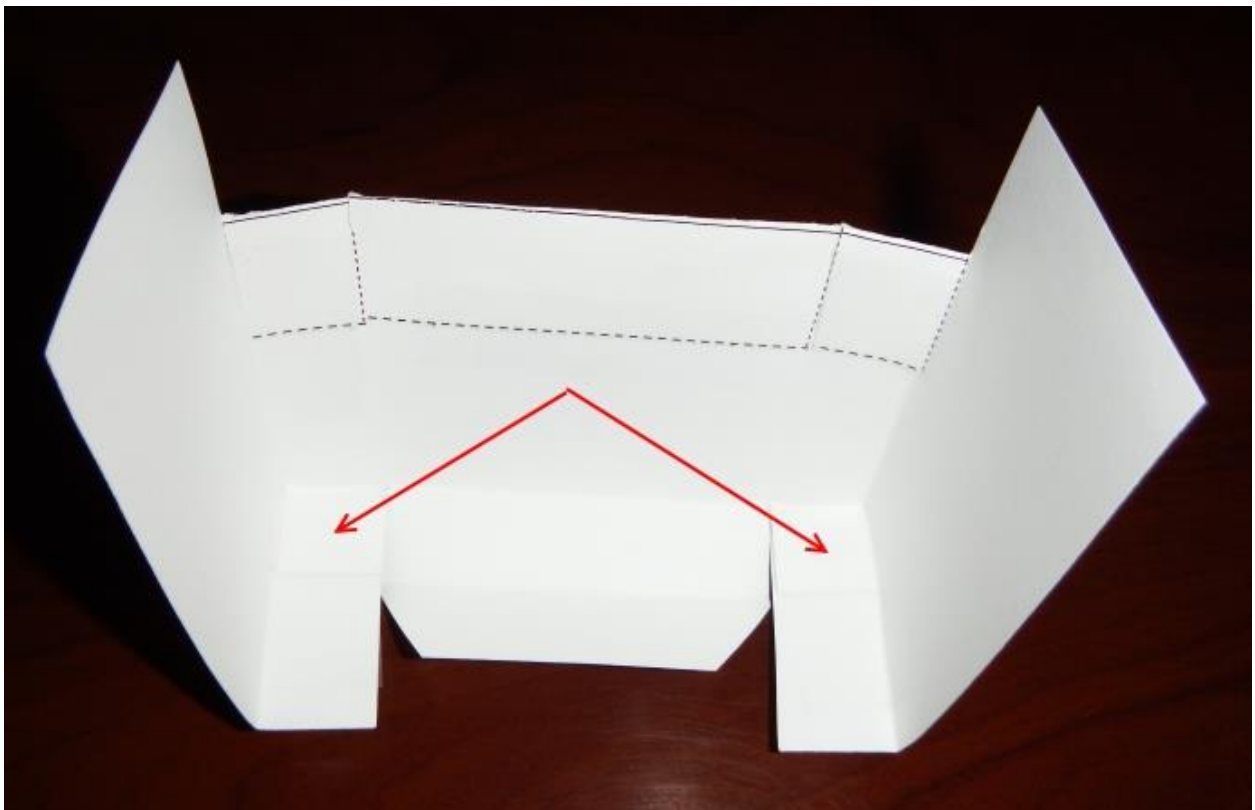
STEP 6: Cut along the 4 short "dotted lines" in order to make "tabs". "Pre-fold" along all of the solid lines to make it easier to form the required box.



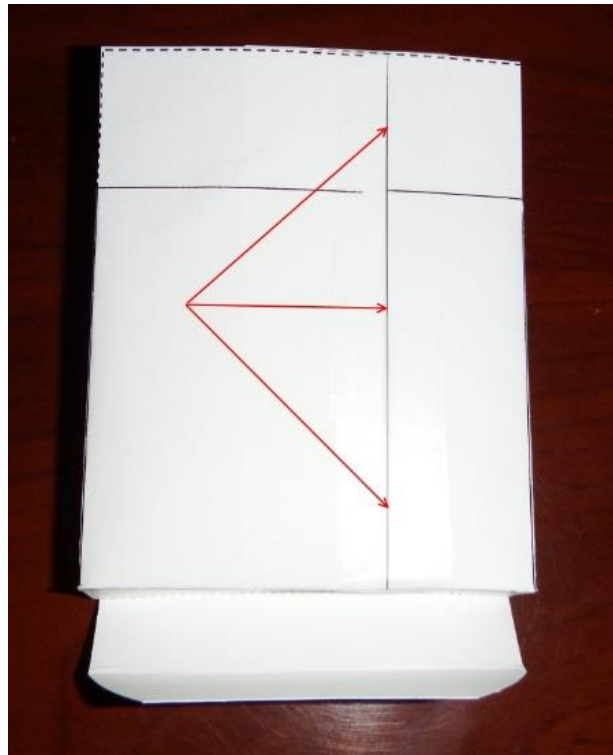
STEP 7: Fold down the top 3 tabs as shown by the red arrows in the below figure and tape them in place.



STEP 8: Fold the sides in and the bottoms up and tape the 2 bottom tabs in place as shown by the red arrows below.

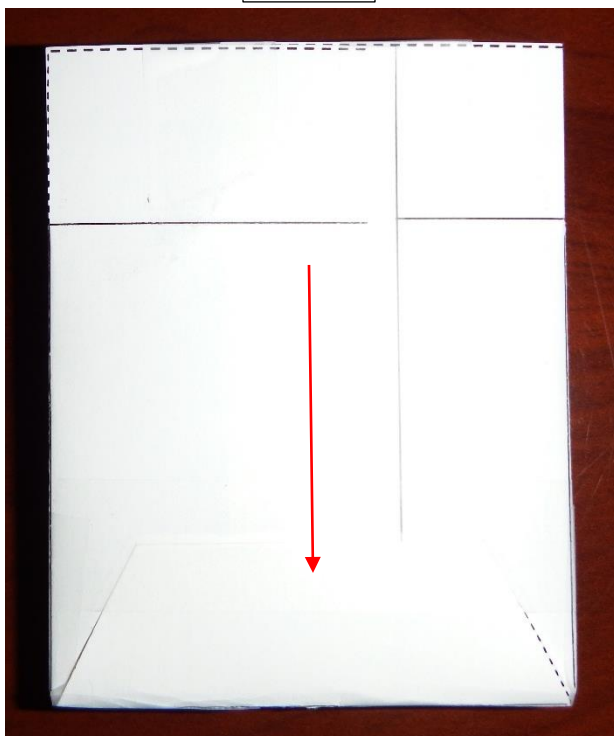


STEP 9: Fold the 2 sides in forming a back. Use the guideline printed on one side (shown by red arrows) in order to line up the back and form a box.



STEP 10: Finally, fold up the bottom and tape it in place (shown by red arrow) . Use tape to reinforce any areas that make sense to reinforce. The final tract holder should look like the below pictures. Note that the back piece sticking up is used to "tack" the track holder to bulletin boards using 2 tacks (one in each corner). You can also tape the track holder up depending on the surface.

BACK



FRONT



STEP 11: Tack or tape the track holder to a public bulletin board. Put 20 tracts into it. Pray!

